

SIMWOR
RACE SIMULATORS

PRO SERIES CONTROLS

SIMWOR
RACE SIMULATORS



CALIBRATION

SELECT VARIANT

PRO GT 3.2



PROFILE

SELECT PROFILE



DIAGNOSTICS

SELECT FIRMWARE

UPLOAD FIRMWARE

DEVICE STATUS : CONNECTED

Version : 03.04.000

FIRMWARE VERSION : 02.001.009



V3.2 PEDAL SOFTWARE USER GUIDE


CONTENTS

DOWNLOAD / INSTALL	PAGE 2
GETTING STARTED	PAGE 6
SELECT VARIANT	PAGE 7
CALIBRATION	PAGE 8
PROFILE	PAGE 11
FIRMWARE	PAGE 16
DIAGNOSTICS	PAGE 19
HELP	PAGE 22

DOWNLOAD / INSTALL

Download the SimworX Pedal Config Tool at www.simworx.com.au/downloads

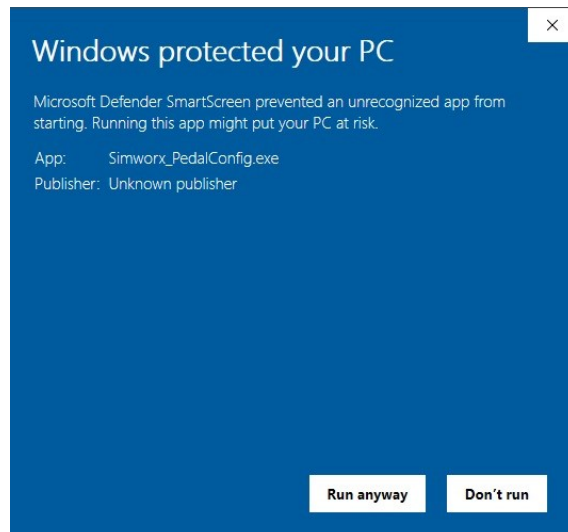
Double click at run the .exe file in the downloads folder.

 Simworx_PedalConfig.exe

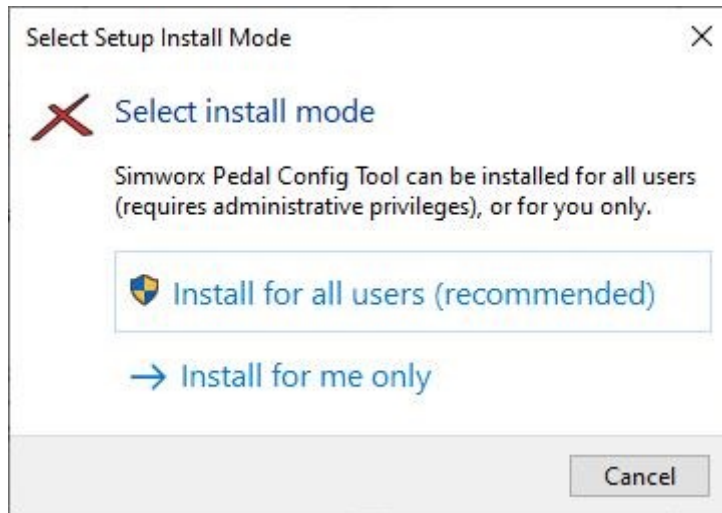
A popup will appear for Microsoft defender, click the More info link.



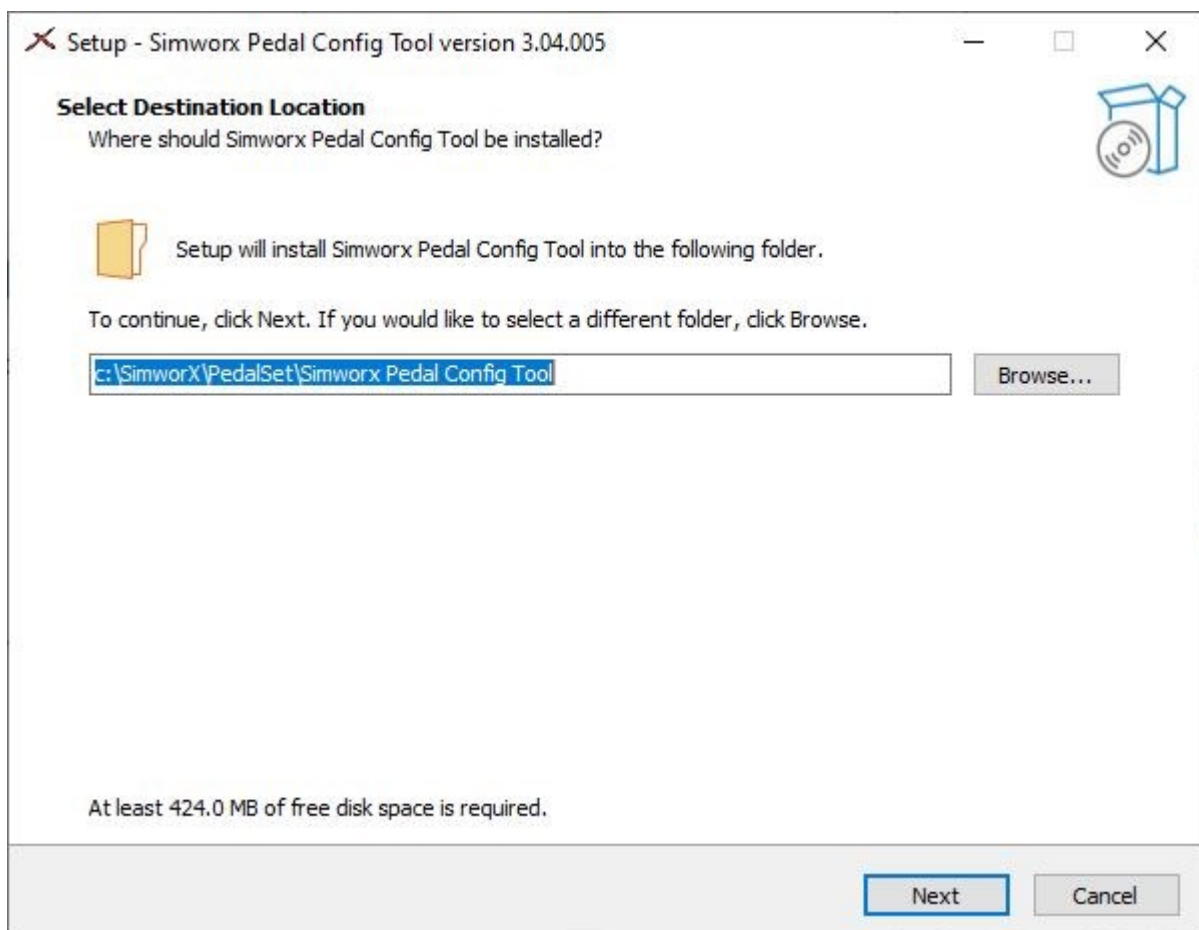
Now click the "Run anyway" button.



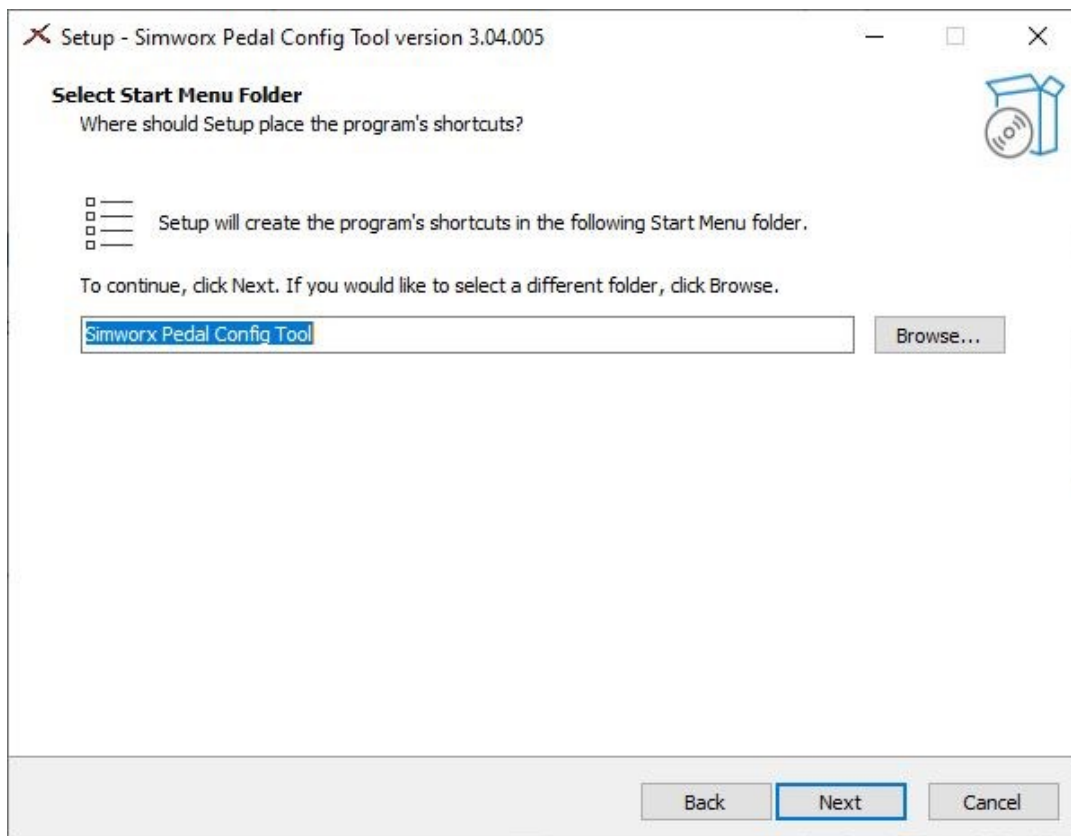
A new popup will appear regarding the installation mode. Install for all users is the recommended option, click the link to move forward.



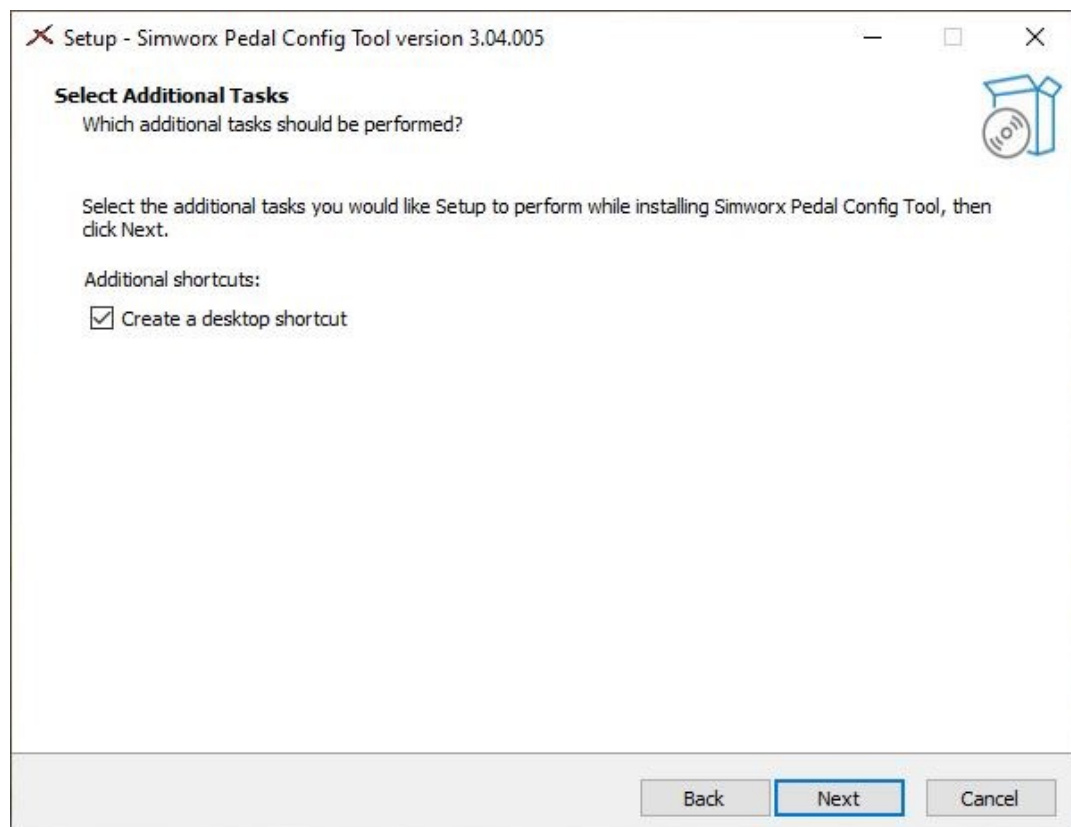
A window will pop up advising of the installation pathway. This can be changed however the default pathway is recommended. Click the "Next" button to continue.



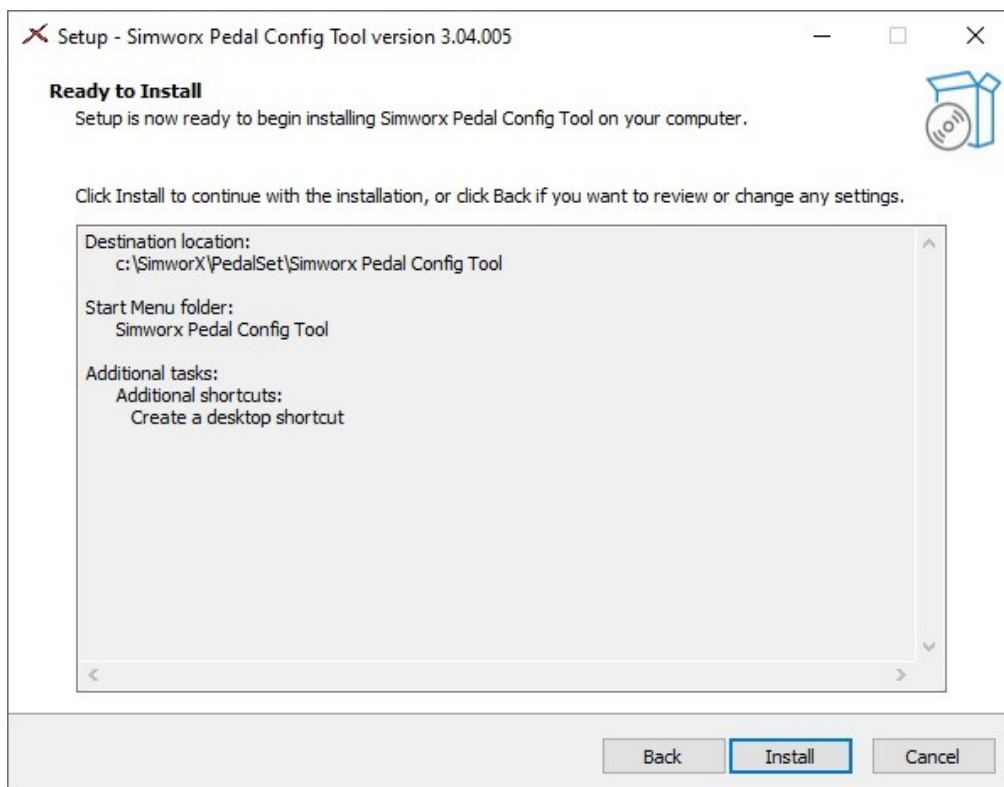
This new window will set the programs shortcut pathway, press “Next” to continue.



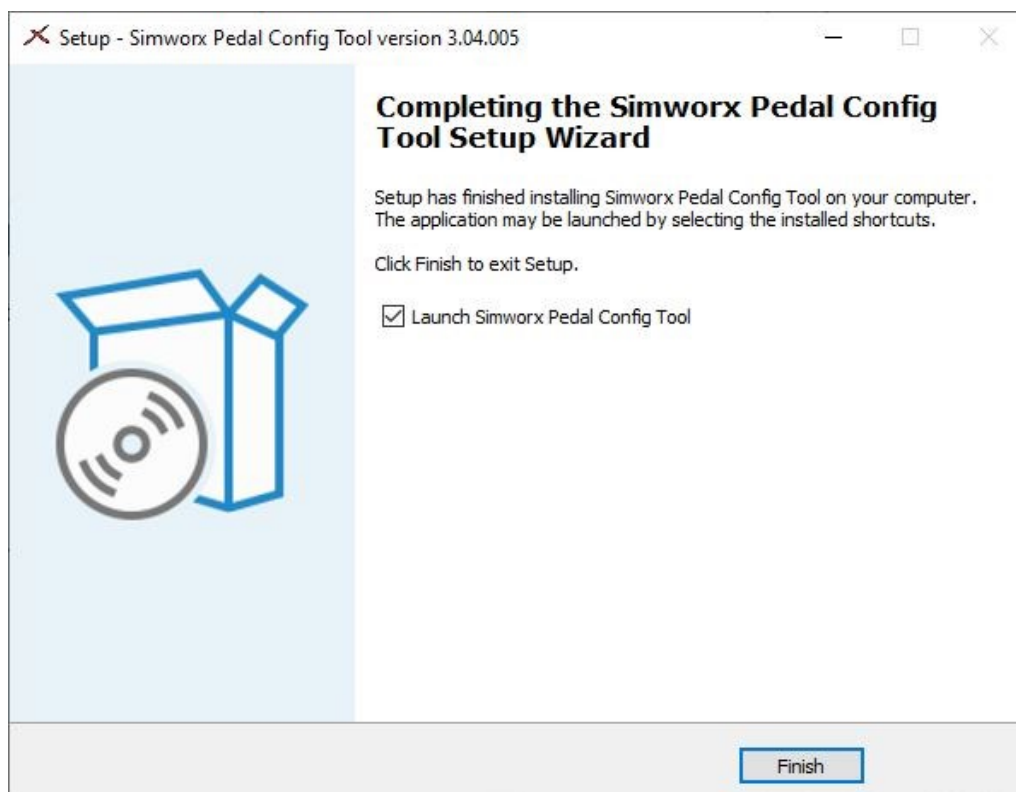
Here you will be asked if you would like to create a desktop shortcut, check the mark box to create a shortcut then press the “Next” button to continue.



Next you will be shown a review of the selections made for the installation, take a second to review these options. When you are happy with the selection press the “Install” button to begin the program installation.



On completion of the installation this notification will appear. Press the “Finish” button to close the installer and launch the Simworx Pedal Config Tool.

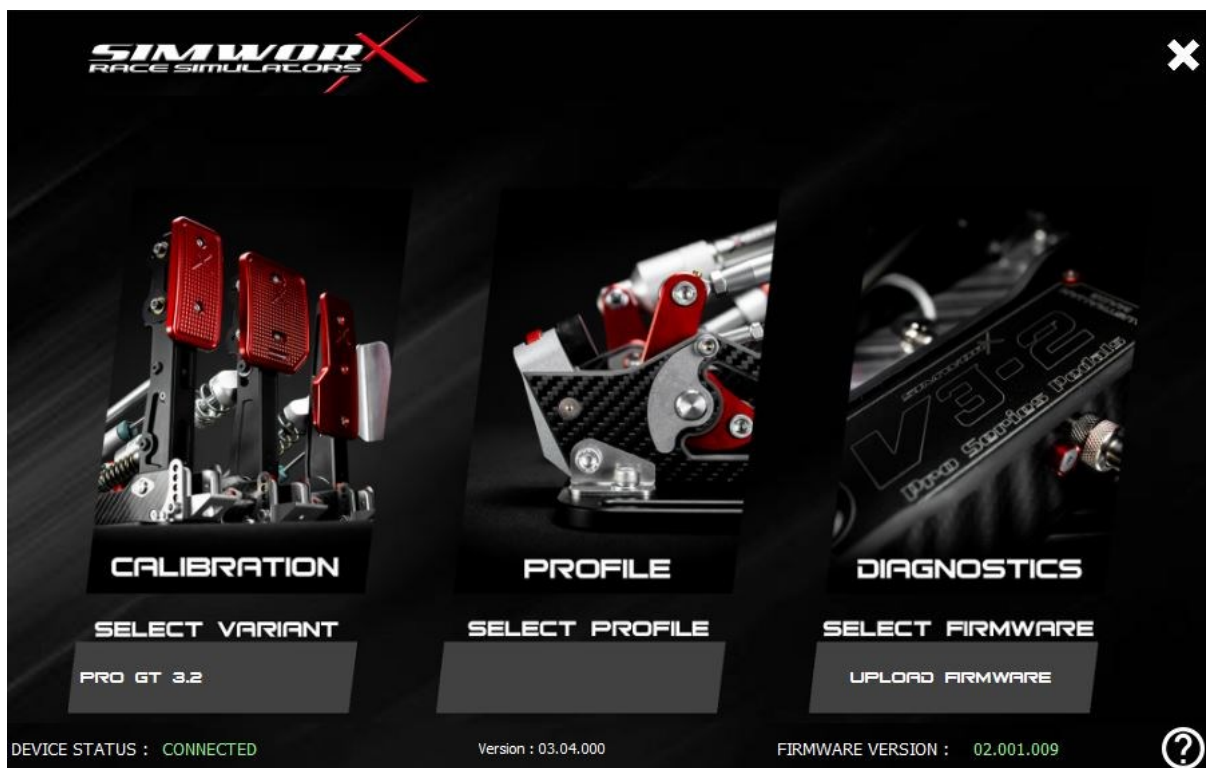


GETTING STARTED

To launch the pedal software, simply double click the Simworx Pedal Config Tool shortcut on the desktop.



When opening the software package, it will open to the main menu.



On this main display you will note that information pertaining to the currently connected pedal set will be displayed. The Device status, Version (software) and firmware version are all displayed across the bottom of the window.

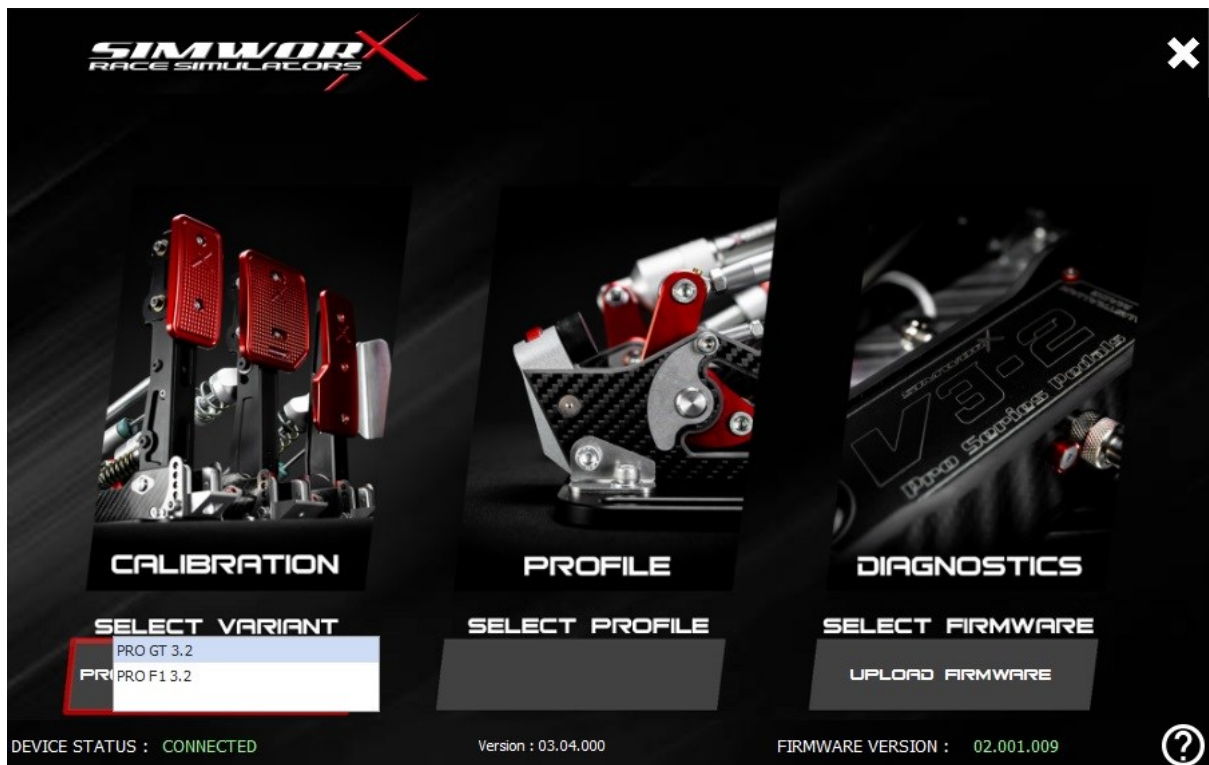
The “Select variant” field will be set to PRO GT 3.2 as standard.

The “Select profile” field will be empty as standard.

SELECT VARIANT

After connecting the pedal set for the first time, you will need to select the variant of pedal set within the software to ensure the calibration process is completed properly.

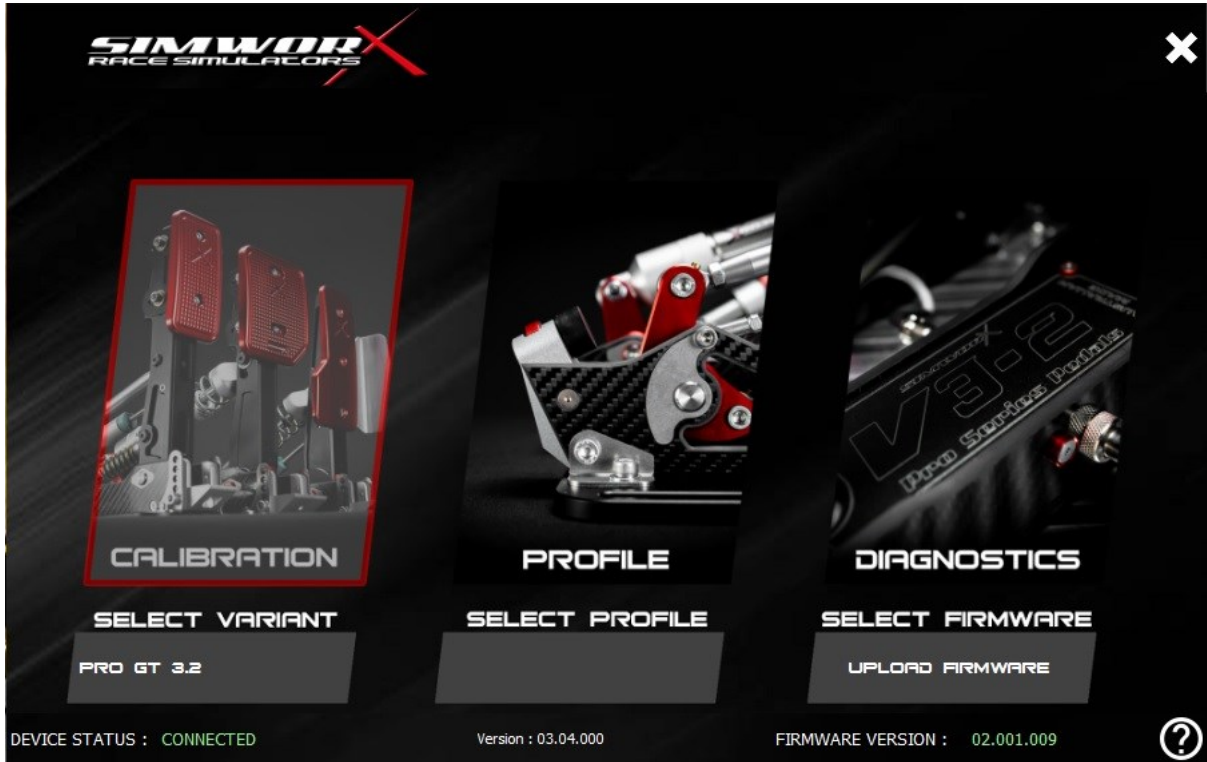
Highlight and select the “SELECT VARIANT” button on the main menu, this will give you a drop-down menu allowing you to select between the PRO GT 3.2 and the PRO F1 3.2 variant.



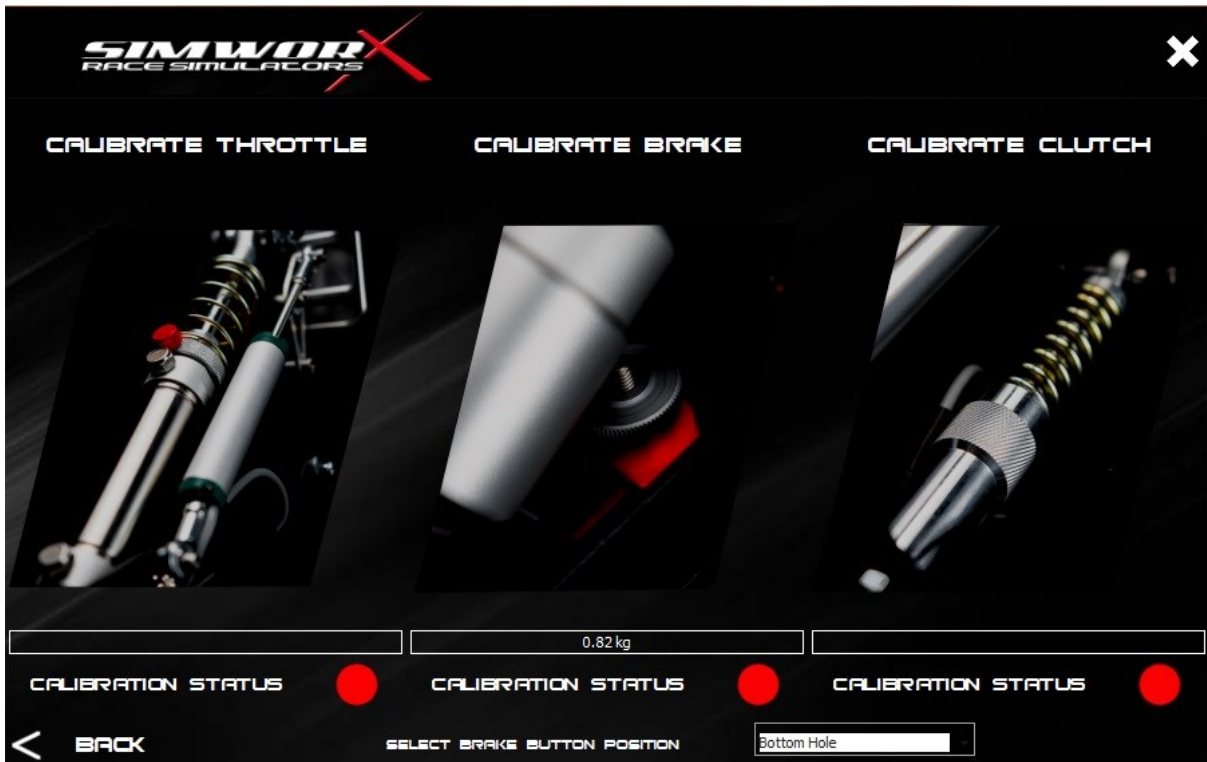
The pedal set will momentarily disconnect and automatically reconnect. Once the device has reconnected you can move on to Calibration.

CALIBRATION

To begin the pedal calibration, highlight to select the “CALIBRATION” button on the main menu.



This will open the calibration status page.



You will note that each pedal has its own indication light and calibration bar within this page.

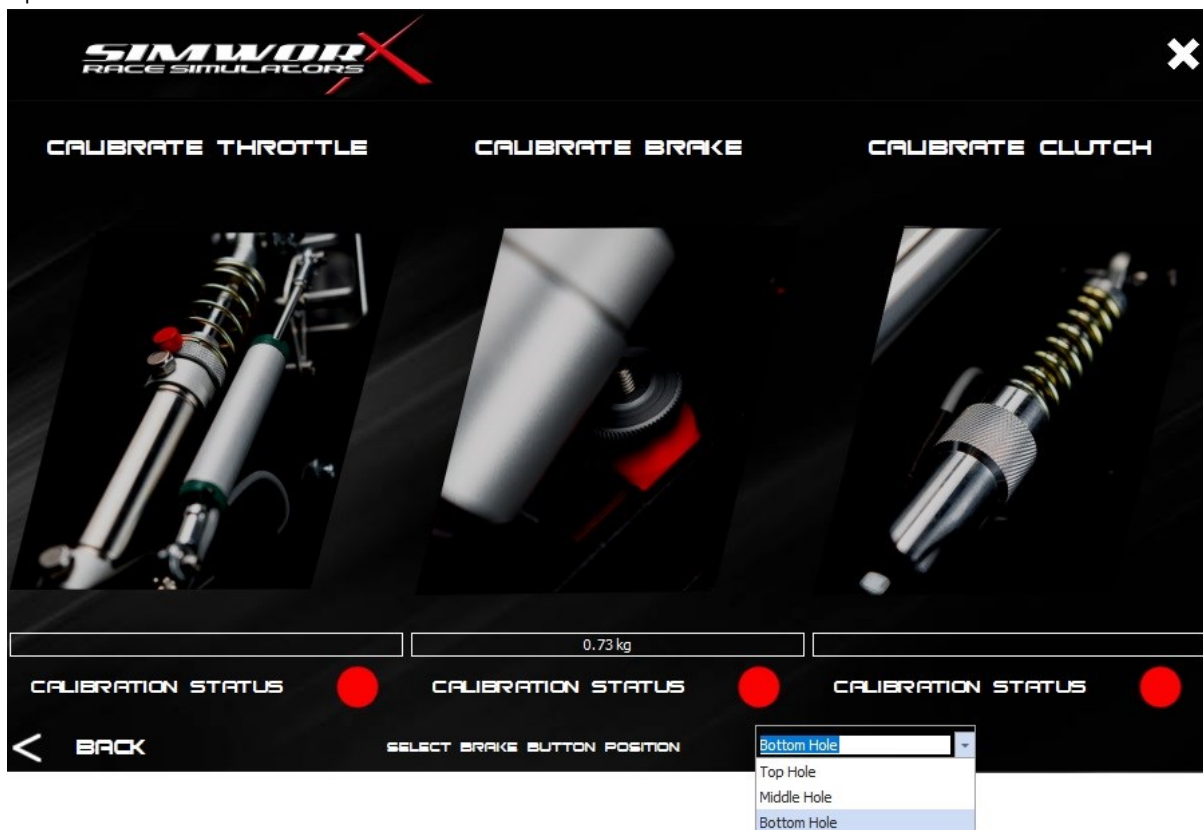
A red indication light next to a specific pedal will indicate that the pedal in question has not yet been calibrated, while a green light will show that the pedal has indeed been calibrated.

The calibration bar for each pedal will show the reported calibration of the individual pedal.

***NOTE: This is a reference bar only, it is intended to show range of the pedal. The reported movement may be a little slow. Be assured that in game there is no lag in movement.

At the bottom of the page, you will see the “Select brake cylinder position” field, this will be set to Bottom hole by default. Check this accurately represents the position of the top cylinder mounting bolt of the brake pedal to get the correct kg load input of the pedal.

To change to selected mounting position hover over the end of the “Select brake cylinder” position field to highlight the hidden arrow, click on the arrow to show all mounting position options.

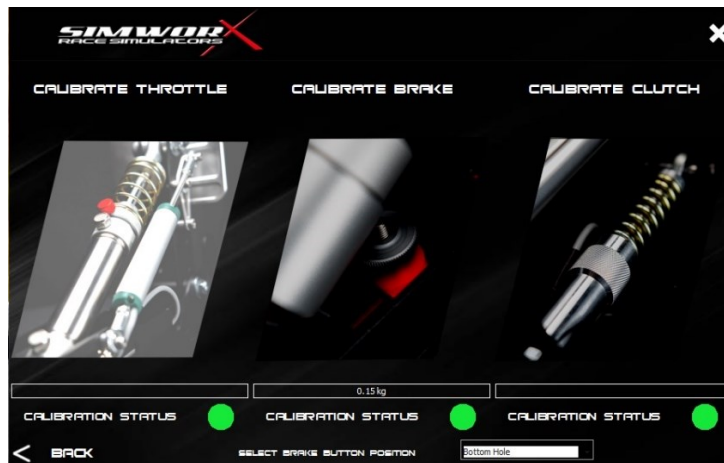


**Refer to the SimworX Pro V3.2 Pedals User Guide for technical information on positioning of the top cylinder mounting position for the brake.

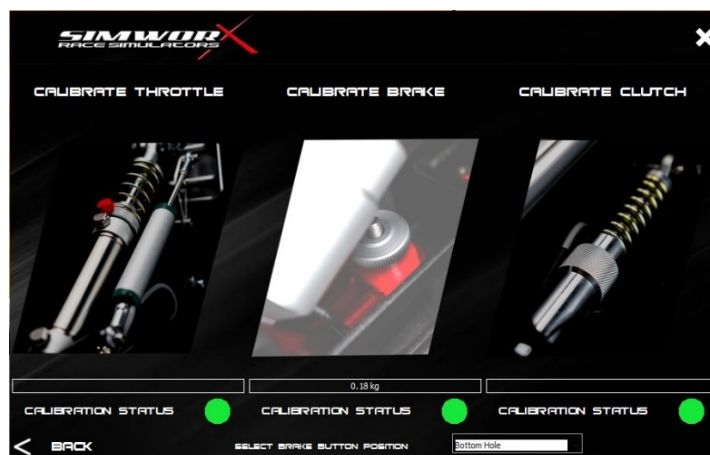
To calibrate a pedal simply highlight and click on the corresponding button and follow the on-screen prompts.

** NOTE: If you wish to recalibrate the pedals after having already uploaded a curve, the curve needs to be set to Default to get the proper calibration.

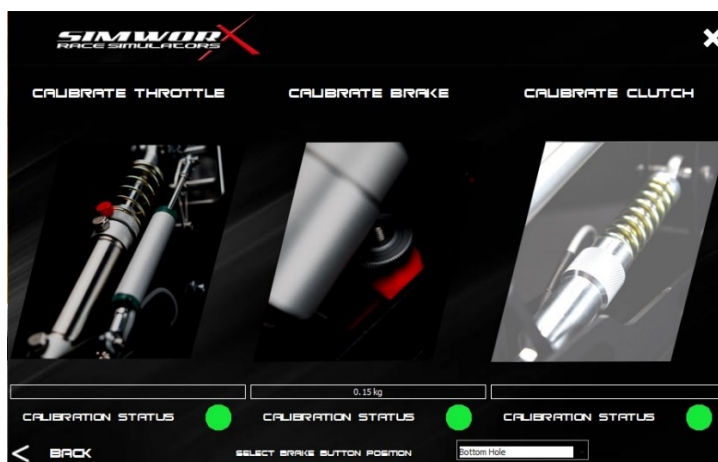
THROTTLE



BRAKE

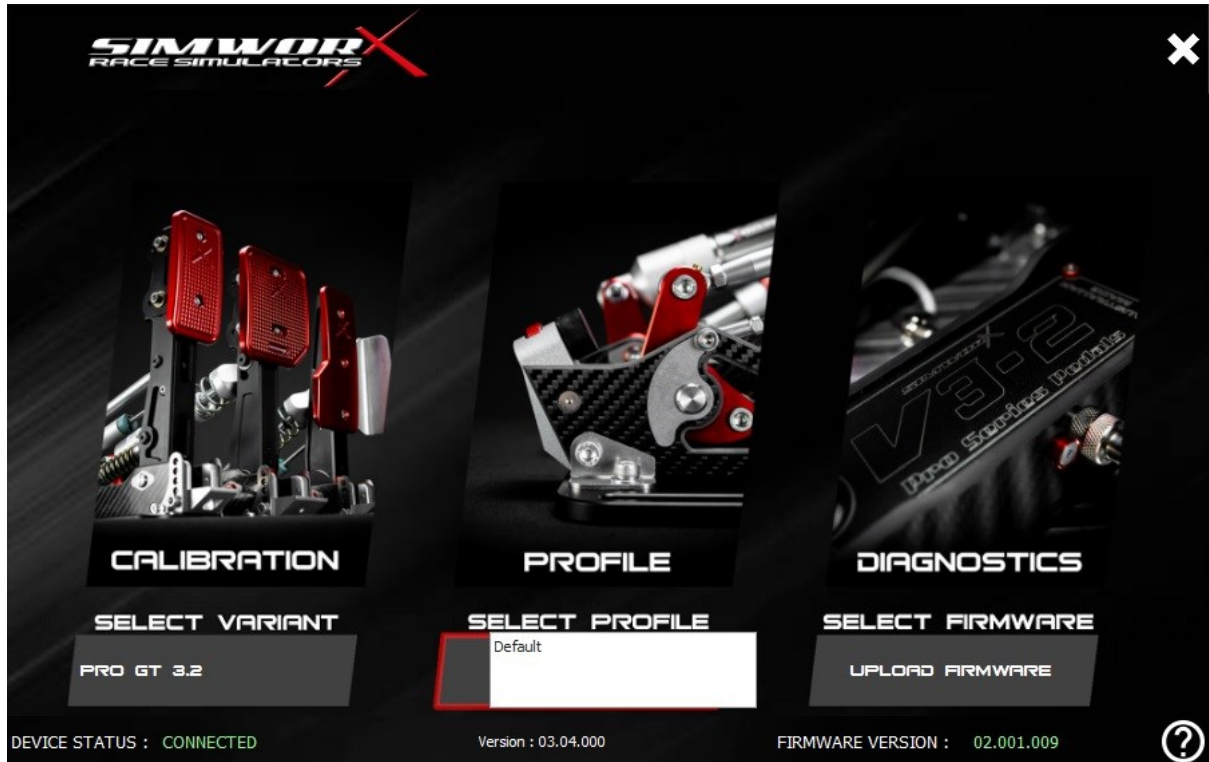


CLUTCH



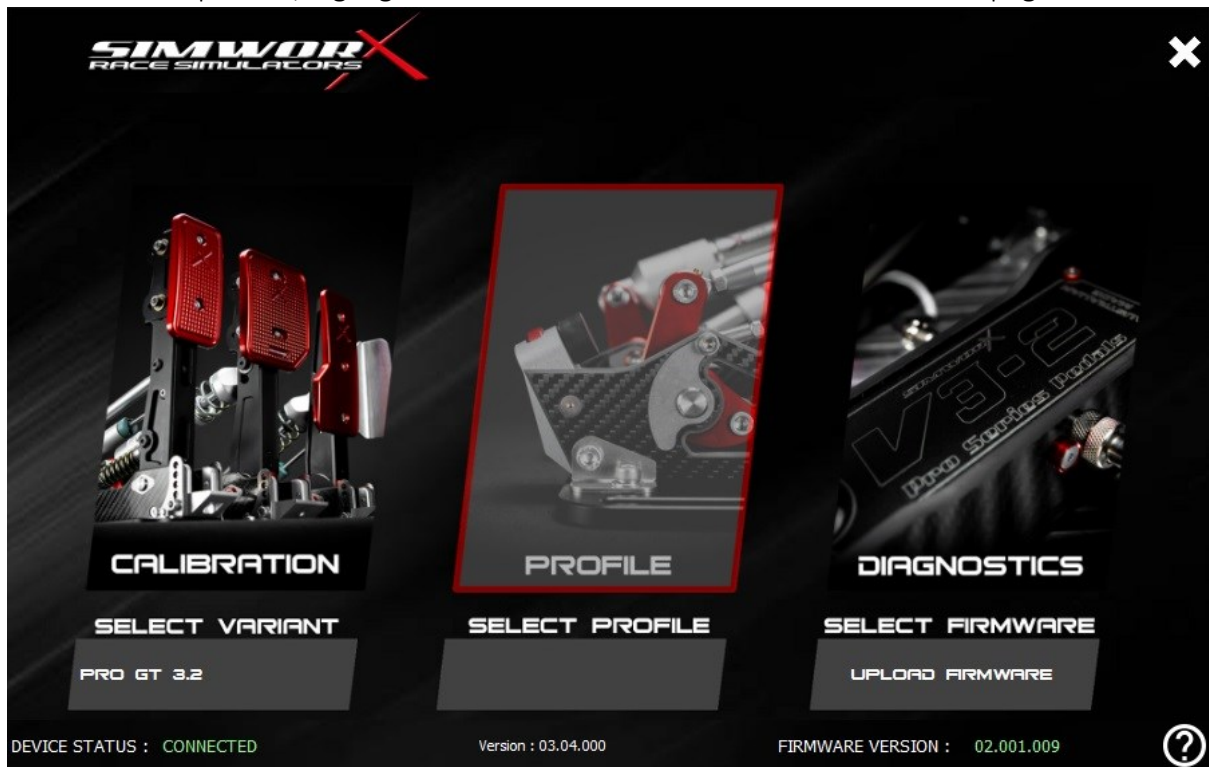
PROFILE

Active profiles can be quickly changed by clicking on the “Select profile” button on the main menu. You will see a list of all available profiles, simply click on the required profile to automatically upload to the pedal set.



Profile creation

To create new profiles, highlight and select the “Profile” button on the main page.



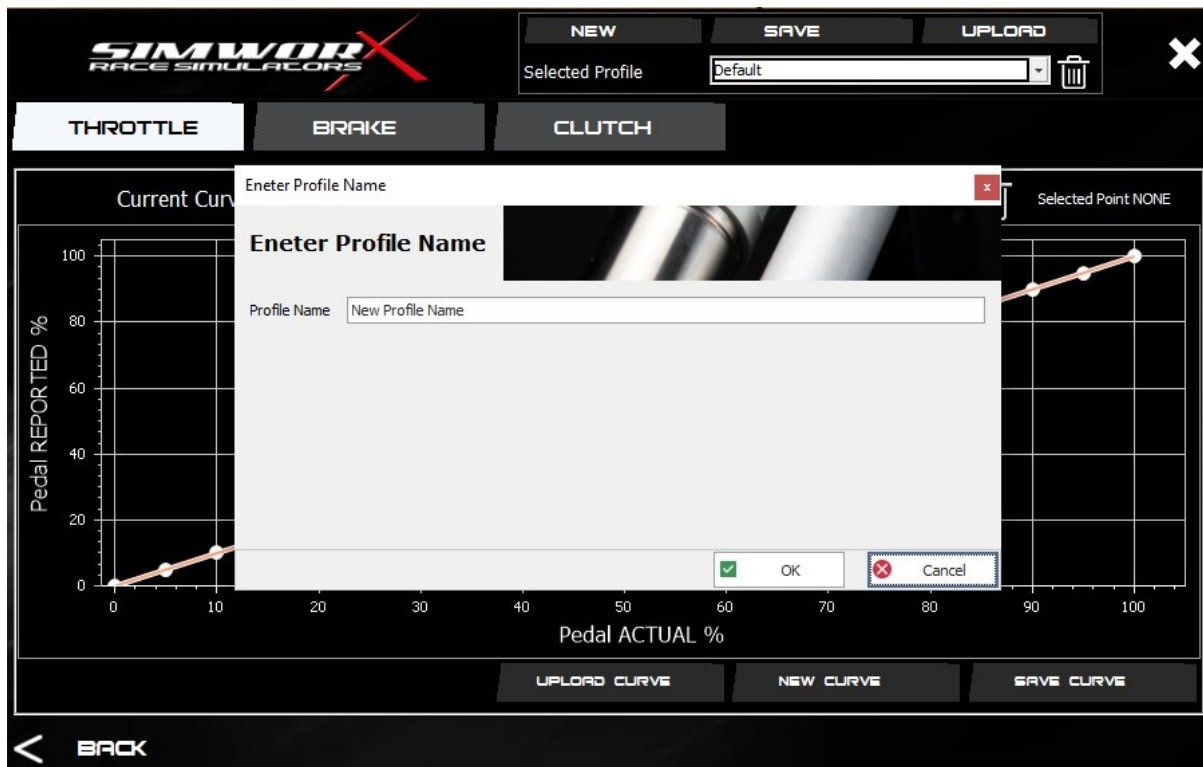
This will open the Profile editing page.



On this page in the top right is the profile tool. Using this tool you are able to create a new profile, this can be done for each game, driving discipline or different cars.

To create a new profile, click “NEW”

Another window will popup asking you to name the new profile.



Enter your desired name for the new profile and hit “OK”. This will create the new profile and give each pedal a default linear curve.

Using the “Selected Profile” drop down menu, select the new profile to begin editing pedal curves. Each pedal can have a different curve within the profile. When changing curves for each pedal, save the profile ensuring the selected curve is saved to the selected profile.

Once you are happy with the profile it can be uploaded to the board for use by clicking the “UPLOAD” button.

If you wish to delete a profile, simply select the profile and click the bin icon next to the “Selected profile” field.

Pedal curve

In the main body of the Profile editing page there are tabs for each of the pedals. By default, each pedal will have a “Default” curve. There will also be a Quick response and Slow response curve built into the software package. These can be easily accessed via the “Current Curve Selected” drop down menu, highlight and select the desired curve.



**NOTE: when changing a curve, it will appear as the white line, while the red line will indicate the curve currently loaded on the pedal set.

New curves can be created by clicking the “NEW CURVE” button. A new default curve will be generated.

To change the nodes of the newly created curve, using the mouse click and drag the nodes to its desired location. A small reference display will appear showing the percent location of the node. There are 21 nodes spaced at 5% increments.



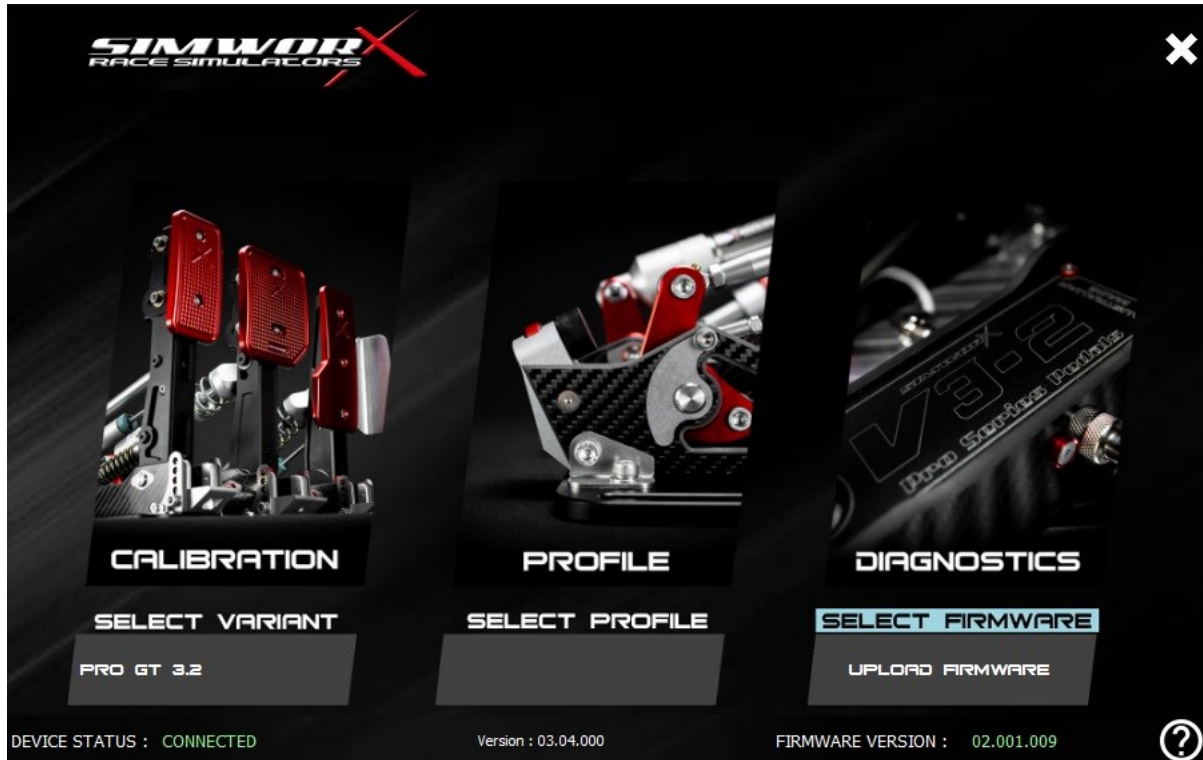
Once the curve is as required save the curve using the “SAVE CURVE” button. You will then be prompted to name the curve, ensure you give the curve a unique name to prevent saving over other curves.

If you use the “UPLOAD CURVE” button, this will upload the curve directly to the pedals and save the curve to the active profile.

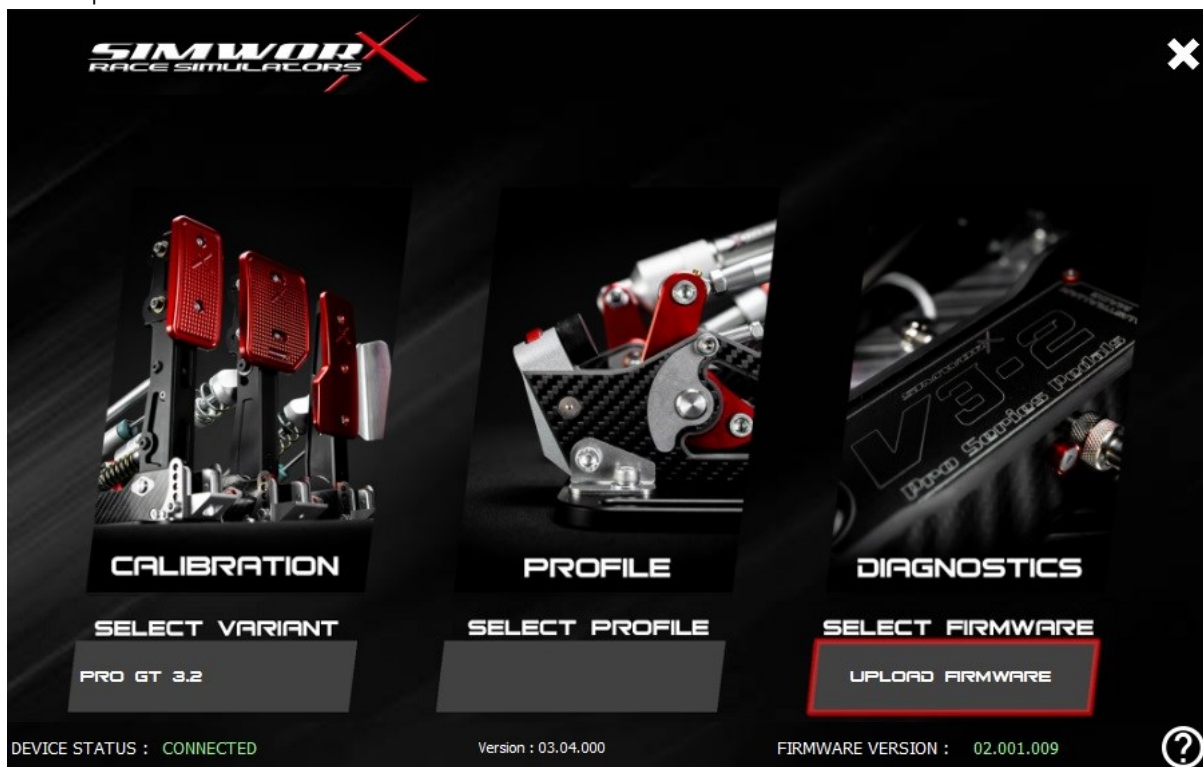
If you wish to delete a curve, simply select the curve and click the bin icon next to the “Current curve selected” field. **NOTE: Any pedal using that curve will be reassigned to a default curve. Even in other profiles.

FIRMWARE

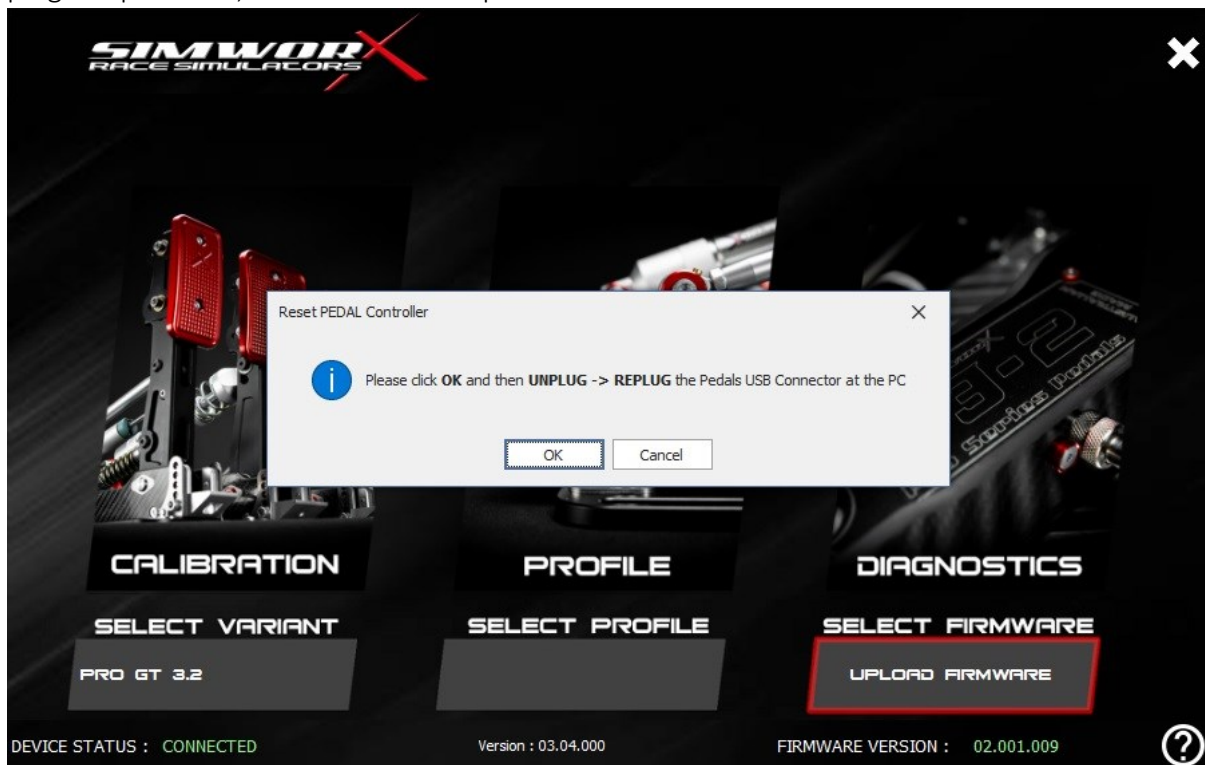
If a new firmware version has been released, you can download it by clicking the “Select firmware” button on the main menu. This will open a web browser and take you to the SimworX site where you can directly download the firmware.



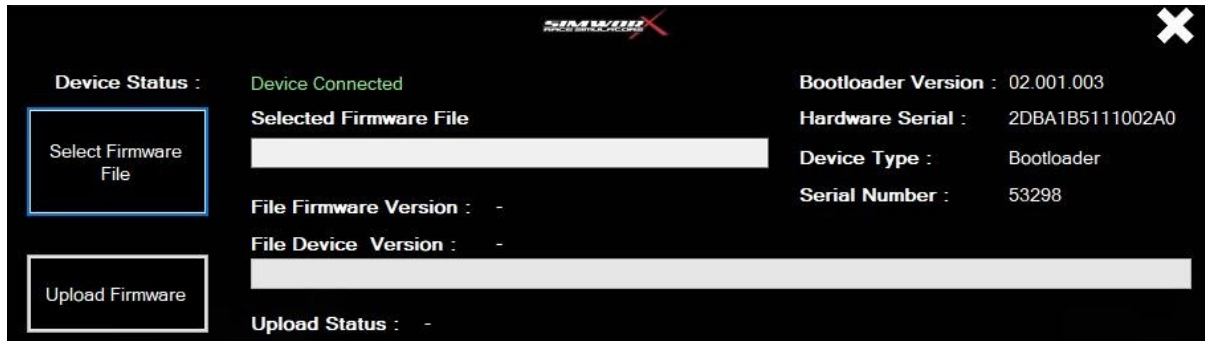
Once the firmware has been downloaded you can upload it to the pedal control board using the “Upload Firmware” button on the main menu.



Once you have opened the “Upload firmware” tool you will be prompted to unplug and re-plug the pedal set, this will allow the pedal control board to enter its bootloader mode.



The Firmware tool will open and display some basic information about the control board.



Press the “Select Firmware File” button and navigate to the save location of the firmware file, select the file to load.



Press the “Upload Firmware” button to begin to upload.

Once the firmware has finished loading, close the firmware tool. You will need to perform another unplug and re-plug procedure.

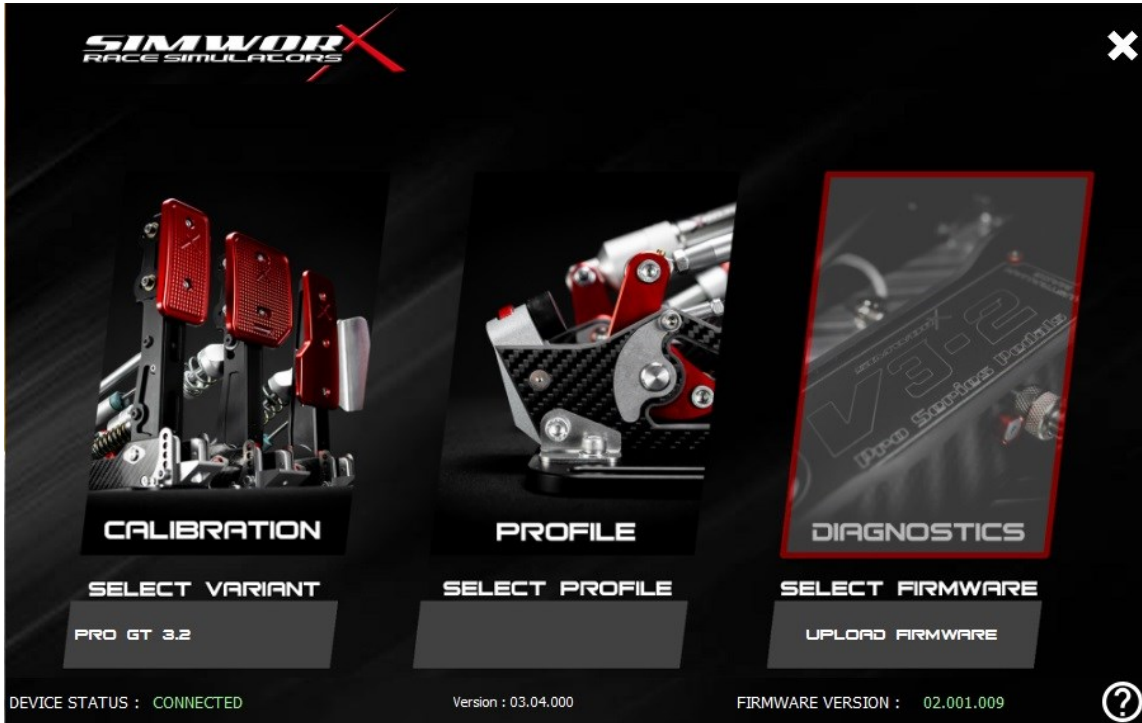
The screenshot displays the SIMWORX firmware tool interface. The window title is "SIMWORX RACE SIMULATORS". The interface includes a sidebar with a "Select Firmware File" button highlighted by a blue box. The main area shows the following information:

- Device Status :** Device Removed
- Selected Firmware File**: C:\Users\Simworx PC\Downloads\SimWorx_PedalConfig\Simworx_PedalConfig
- File Firmware Version :** 002.001.008
- File Device Version :** SimworX_Pedals
- Bootloader Version :** -
- Hardware Serial :** -
- Device Type :** -
- Serial Number :** 53298

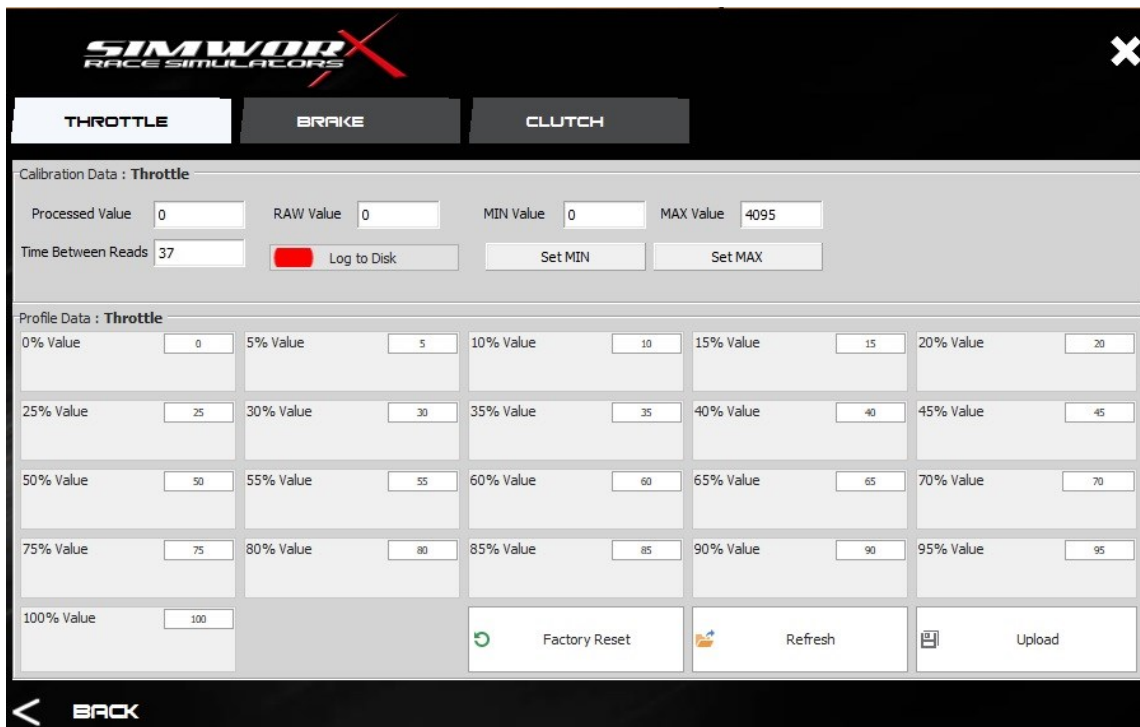
A green progress bar is visible below the file device version. The **Upload Status :** Update Complete - Booting Application. A close button (X) is in the top right corner.

DIAGNOSTICS

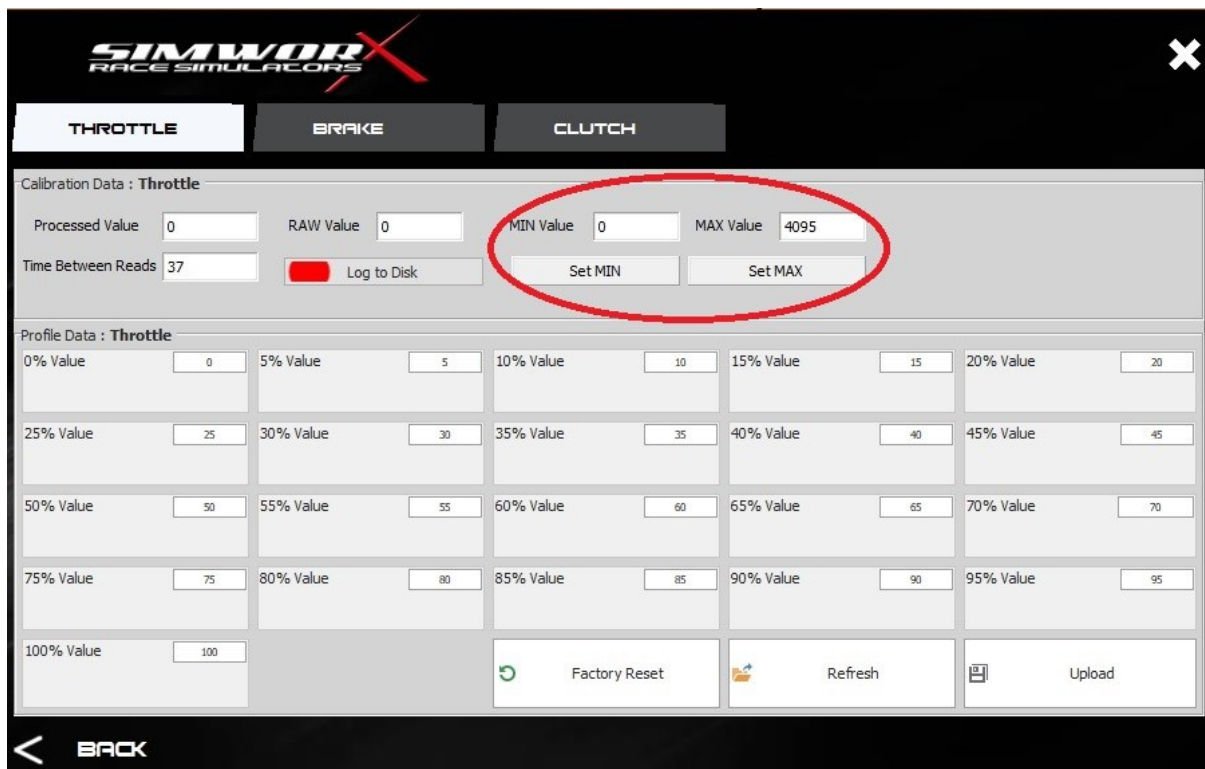
To access the diagnostic page, highlight and select the “DIAGNOSTICS” button on the main menu



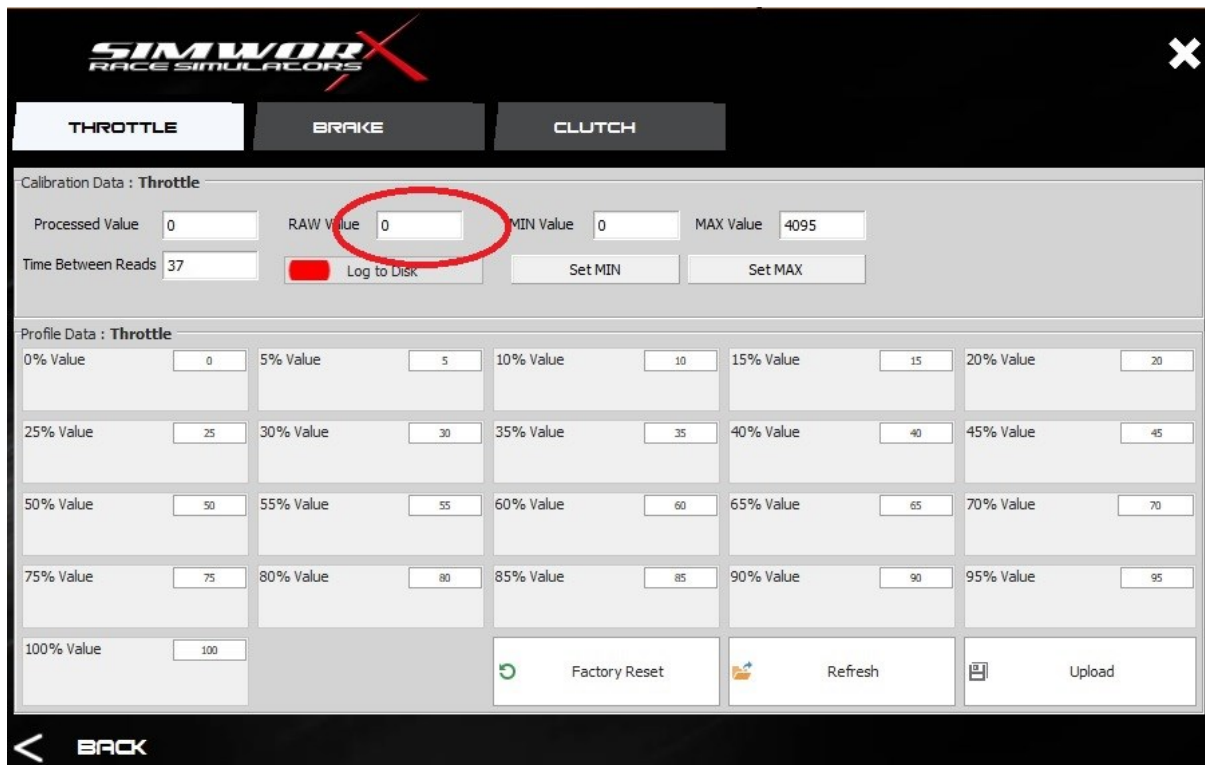
On this page you will see three tabs, one relating to each of the pedals. If set to PRO F1 3.2 you will only see two pedal selection above the diagnostic table.



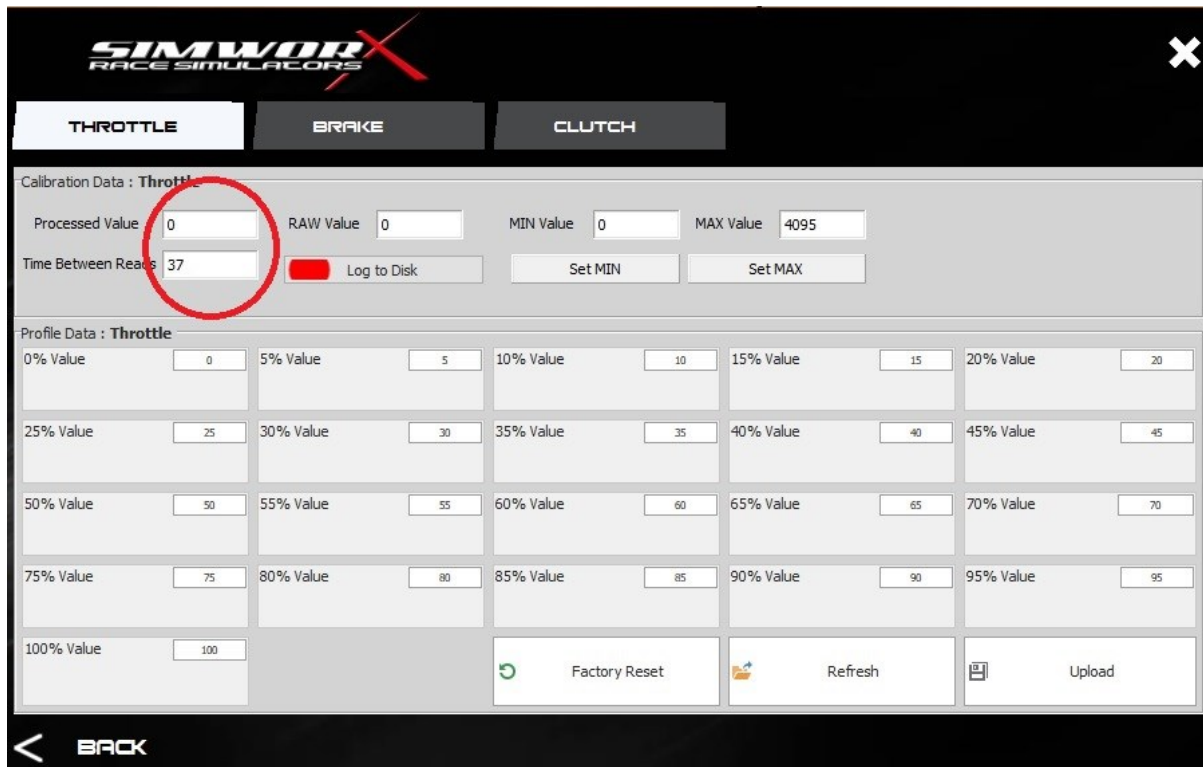
After calibration the minimum and maximum values for each pedal will be set as shown. If you wish to change the minimum and maximum values to your desired amount, simply enter your preferred value into the respective box and press "Set MIN" or "Set MAX" button.



Here you will see the raw value being seen by the board.



In these fields you will see the processed value and the time between reads. Both fields cannot be changed.



In the lower half of the window, you will see the numerical value of the curve loaded for the pedal in question. You can manually change each value and upload to the board using the "UPLOAD" button. **NOTE: this will load to the board but will not change the saved curve.

HELP

If you are having any trouble with the software, the question mark in the bottom right corners of the main menu will take you to the SimworX website software help page. Here you will find FAQ and answers relating to the software and pedals.

