



PRO SERIES DATA DASH

CUSTOMER INSTALLATION GUIDE

CONTENTS

DOWNLOAD SIMHUB	PAGE 1
SIMHUB LICENSE	PAGE 2
LOADING LED PROFILE	PAGE 3
LED CONNECTION	PAGE 4
DATA DASH	PAGE 8

DOWNLOAD SIMHUB

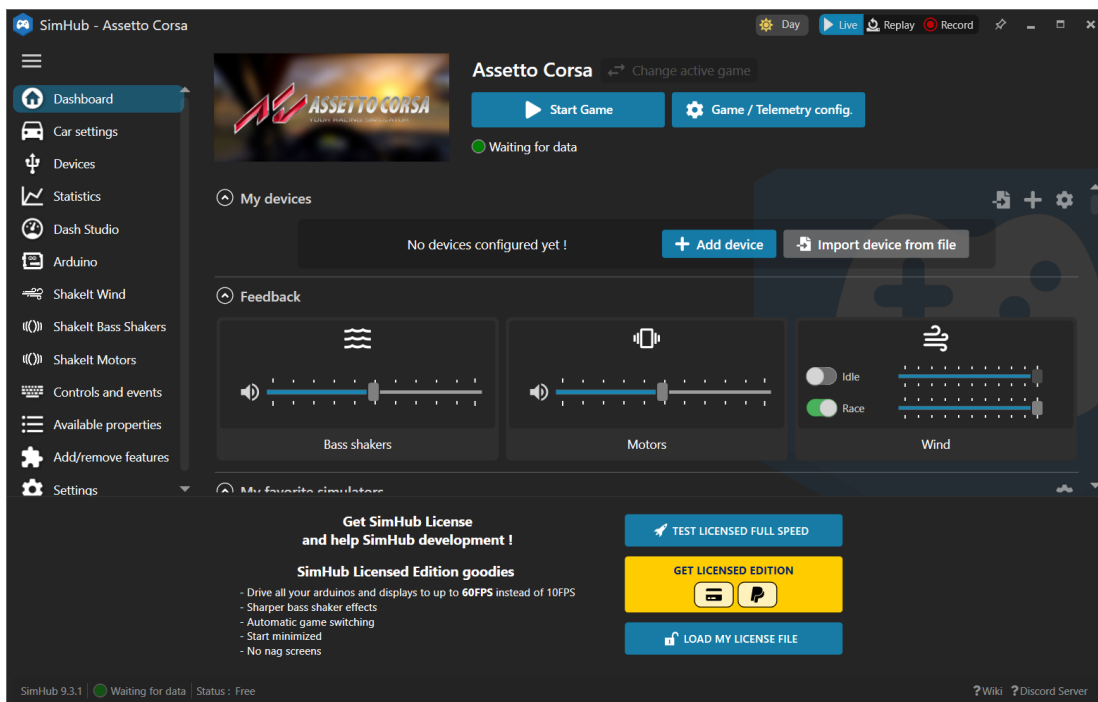
Simhub can be downloaded from <https://www.simhubdash.com/download-2/>, alternatively you can click on the yellow button at the bottom of the Simhub software “GET LICENSED EDITION”

- Click the large blue download button, this will download the current version of the software.



- Once downloaded extract the .zip file and run the simhubsetup.exe file to install the software.

The software will open on the desktop.



SIMHUB LICENSE

A Simhub license is not required to get your Data Dash and Led's to work, however it is advised to get one. The license will allow the software to auto detect the current game and load the data output required for the Data Dash and Led's.

If you wish to get a license simply follow these steps.

- Go to <https://www.simhubdash.com/get-a-license/>, select the payment amount you wish to pay and select your payment method, click the "Proceed to payment" button and follow payment prompts.

Get a license

Get a SimHub license and help SimHub development !

Getting a license helps to buy new games to add, new hardware to test, and the infinite quantity of coffee needed to feed the developer. And finally it's an encouragement to go further on SimHub.

SimHub Licensed Edition goodies

- Drive all your arduinos, displays and shakers to up to 60FPS instead of 10FPS
- Automatic game switching
- Start minimized
- No nag screens

Did you know ?

- SimHub has been developed tirelessly by a single developer for more than 8 years.
- It took at least 4 coffee makers and 4 desk chairs
- SimHub now supports more than 80 games.
- Way too many arduino died in the process ...

Because SimHub purpose is to keep sim racing affordable and fun, you can choose yourself the license price

1 Select the amount you want to give for your SimHub licence (20% VAT included)

30€ 20€ 15€ 10€ 8€ 6.99€

2 Select your payment method

Bank card, Apple pay, Google pay, Wechat ... Paypal

3 Complete

You will be redirected to Stripe, our secure payment platform to complete the payment.

Once completed you will receive your license under 24 hours to the email prompted during the payment (usually a few minutes).

If you haven't received it after 24hours, do not hesitate to [contact me](#)

PROCEED TO PAYMENT

A few checks to make sure everything goes fine :

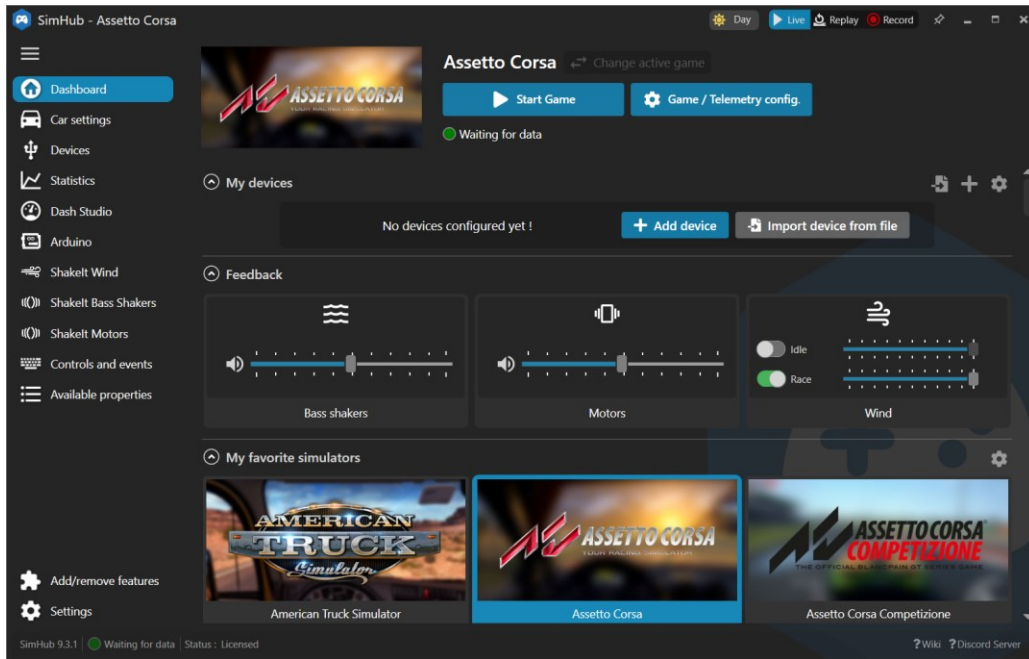
- Make sure your mailbox is not full or inactive.
- Check your spam folder in case your mail provider wrongly classified it as spam.
- When using Paypal make sure your primary paypal email is up to date.

- Once payment has been made you will receive an email with the license file attached. Download this license file. With the license file saved on your PC click the "LOAD MY LICENSE FILE" on the bottom of the Simhub software. A new window will open, navigate to where you saved the license file, select it and then press the "Open" button to load.

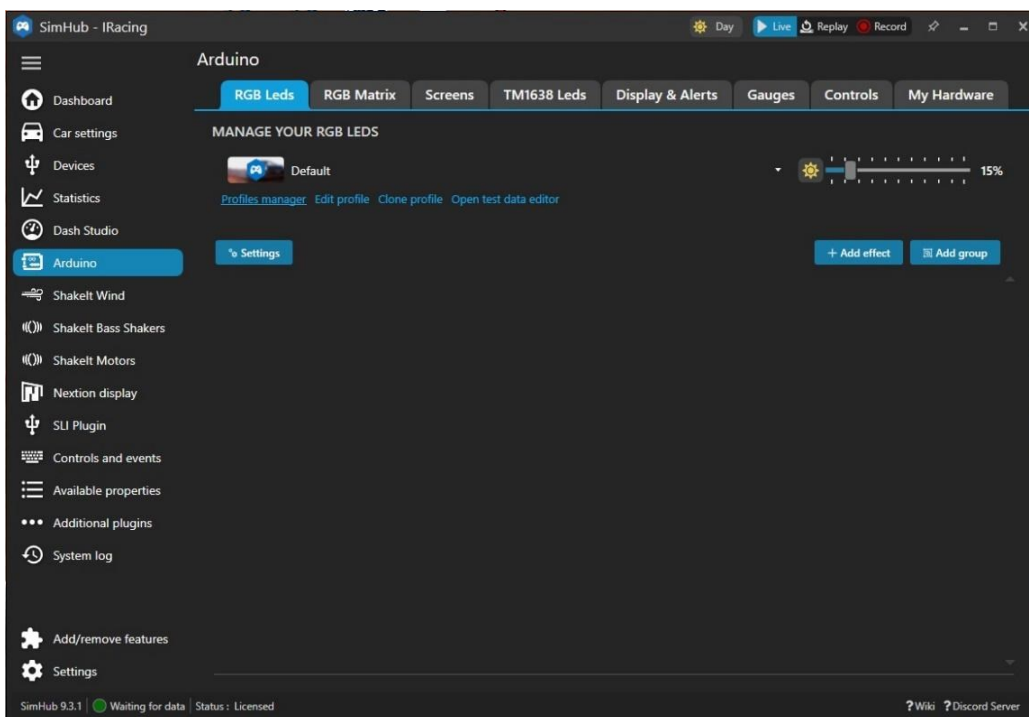
LOADING LED PROFILE

First go to <https://simworx.com.au/downloads/> and download the Led profile.

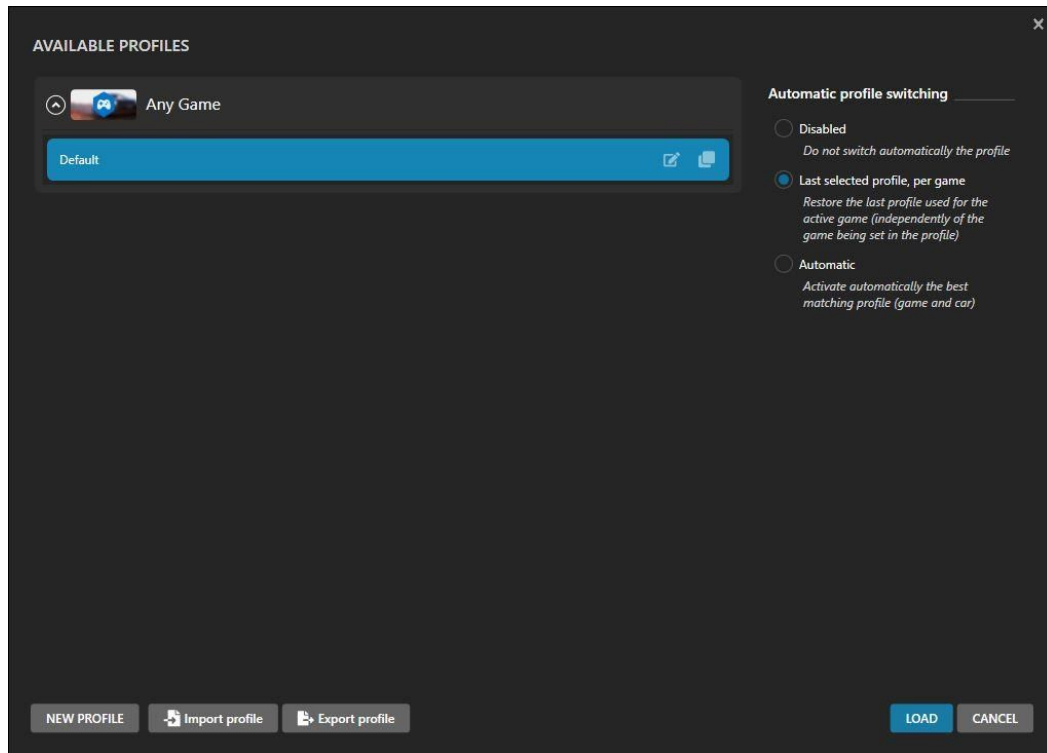
- Open Simhub and select the “Arduino” tab on the left side of the screen.



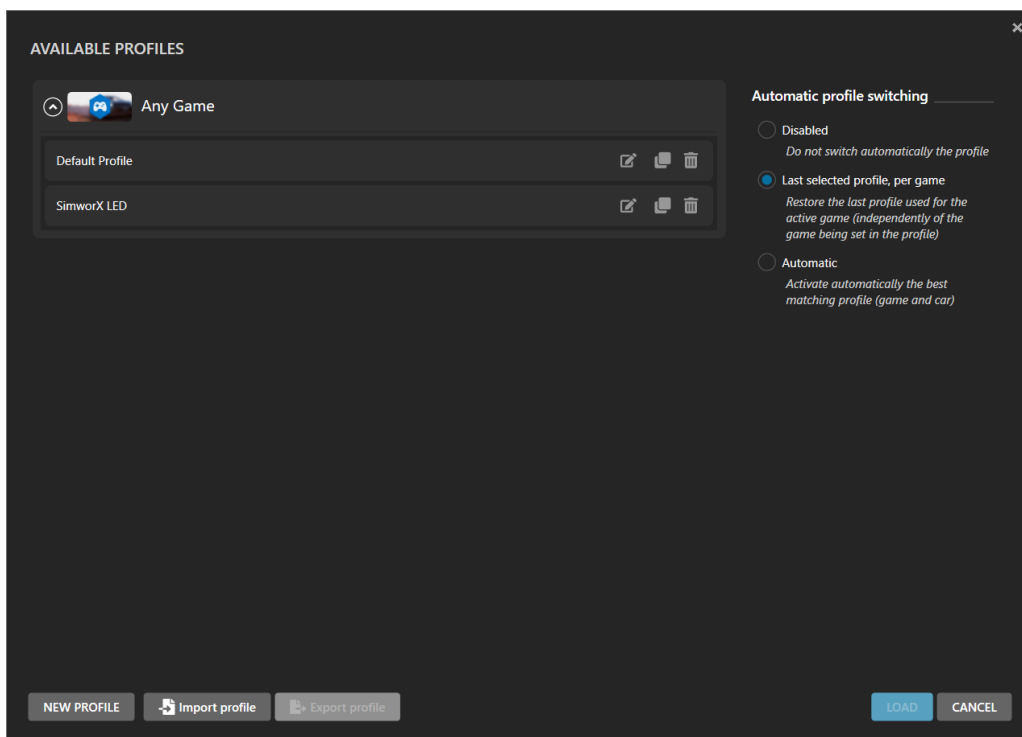
- Within the RGB Leds tab select the “Profile manager” option.



- Select the “Import profile” button.



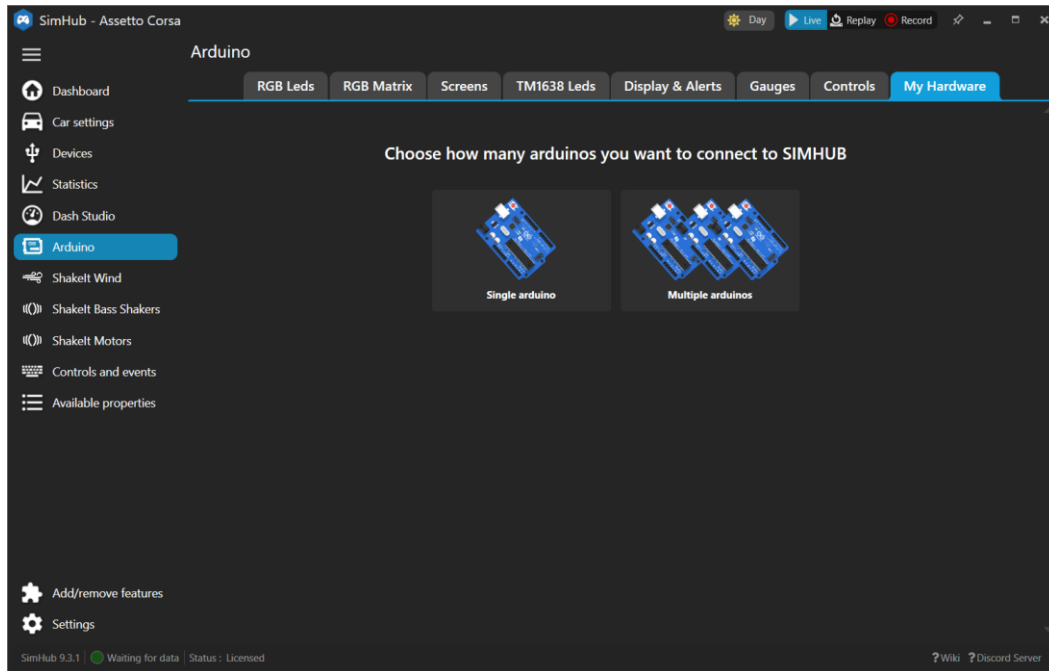
- Navigate to where you have downloaded the Led profile from simworx.com.au/downloads. Select the profile “SimworX LED” and click “Open”.



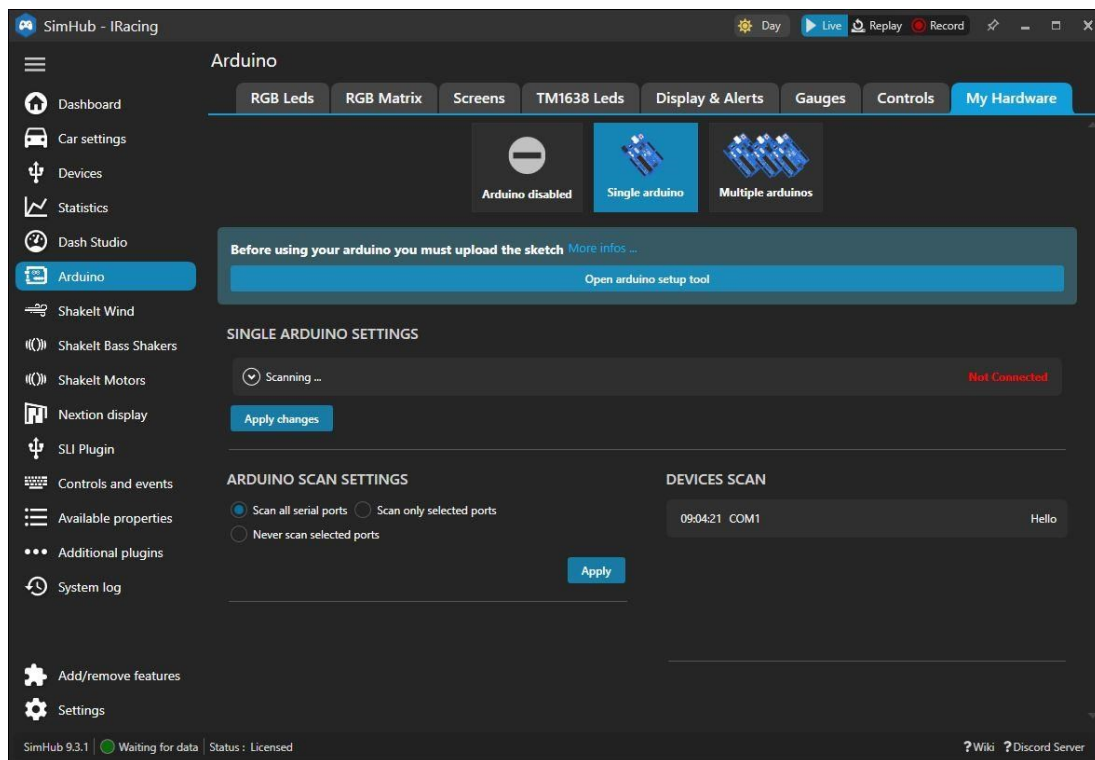
- Now the Led profile will be available within the software. Select the profile so that it is highlighted and press the “LOAD” button.

LED CONNECTION

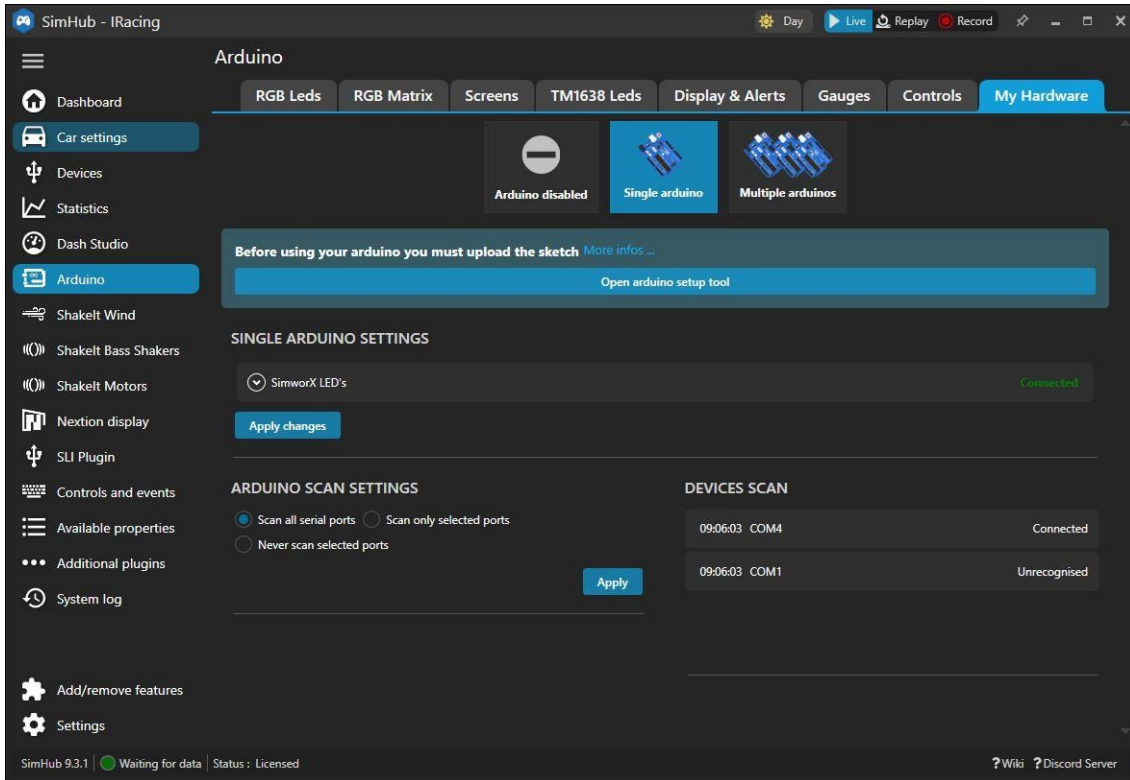
- Within the “ARDUINO” tab on the left of the Simhub software, you will see there are tabs across top of the screen. Select the “My Hardware” tab.



- On this tab you will see options for Single or Multiple Arduino setups, select the “Single Arduino” option.

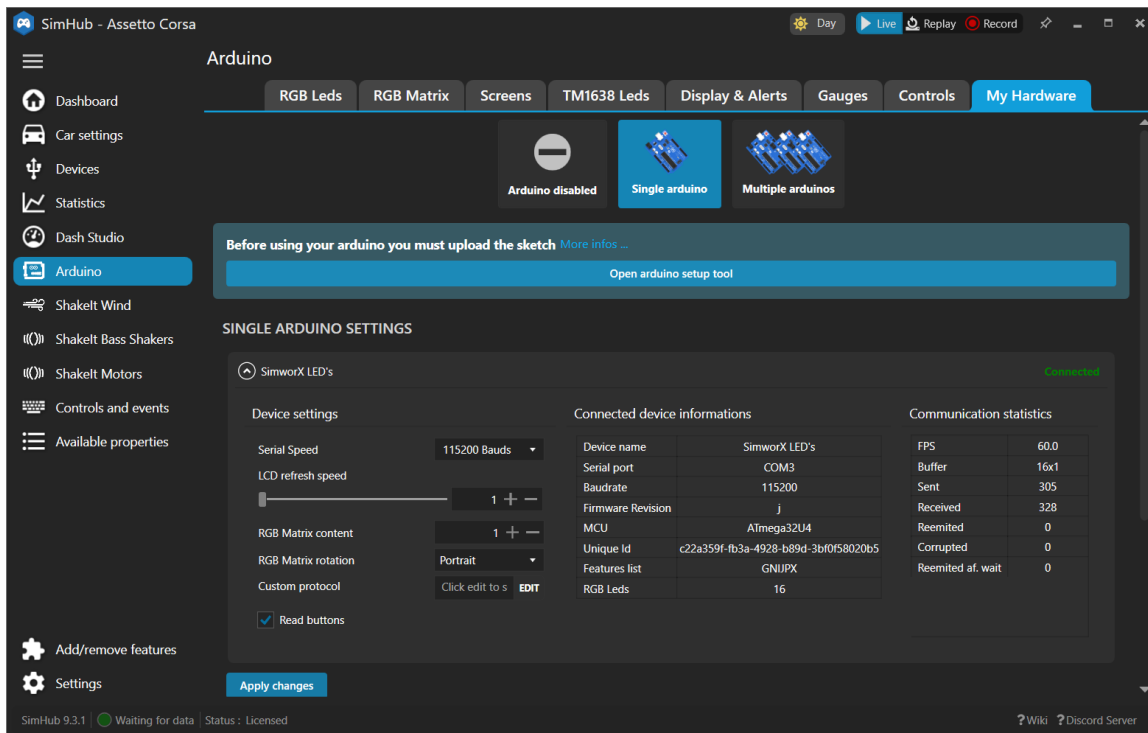


- Simply plug in your SimworX Pro Series Data Dash and the software will pick up the Leds within the dash and load the desired Led profile.

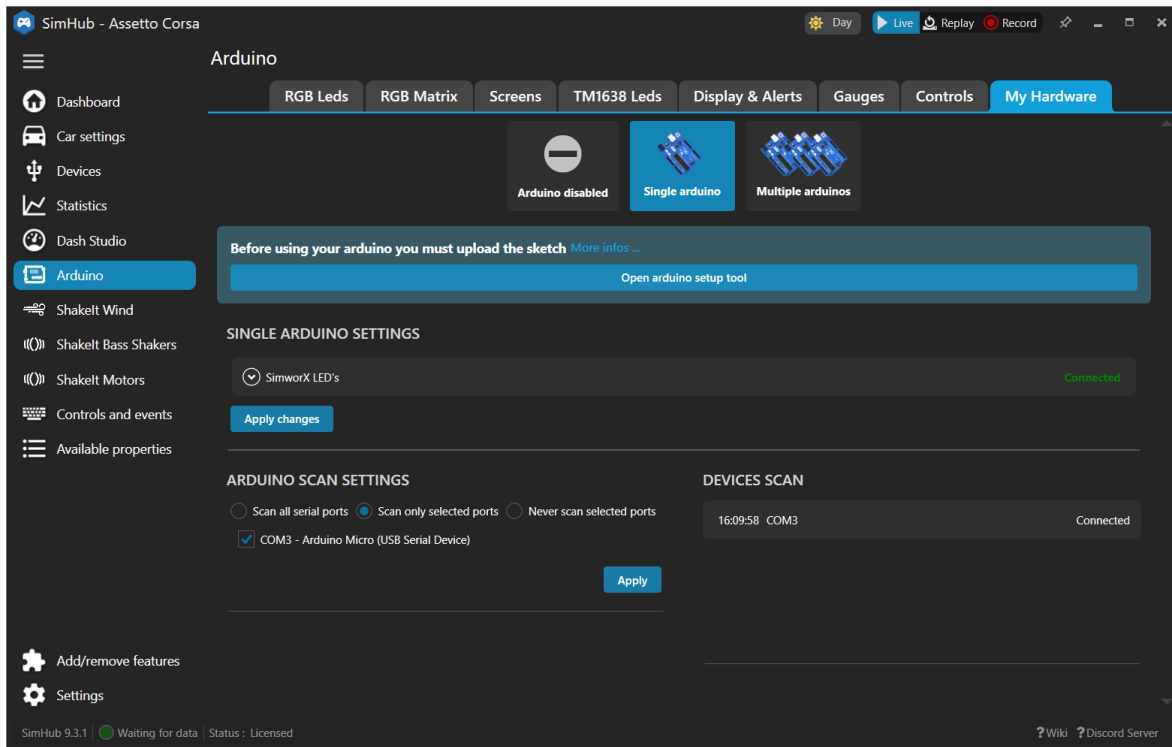


- Now you will be able to see the connected Leds, click on the drop down menu to open all the connection information. Once this is viewable please take note of the “Serial port” used by the Leds. In the example below “COM 3” is the serial port in use.

Click on the Led connection information again to close the menu.



- In the lower third of the screen you will see the “ARDUINO SCAN SETTINGS”. Select the “Scan only selected ports” option. This will give you a list of the COM ports currently in use. Select the COM port assigned to the Leds and click the apply button.

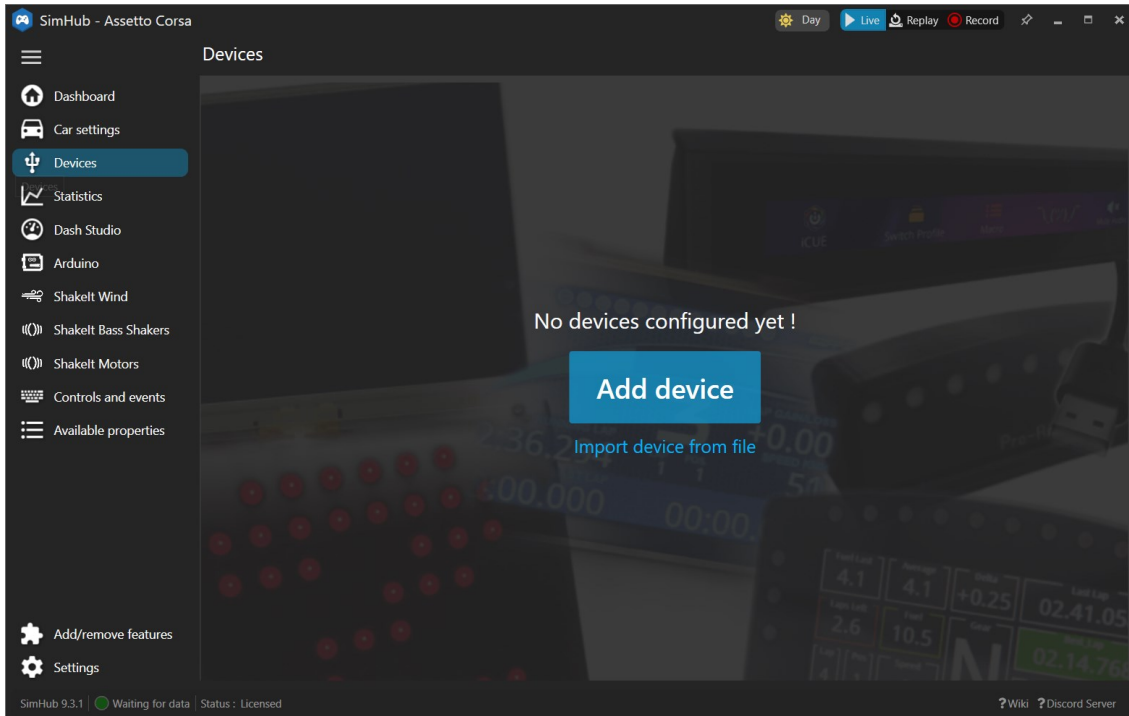


This will stop Simhub from sending communication requests to all other COM ports. If this is not done it can sometimes give you issues with other devices such as motion and direct drive steering units.

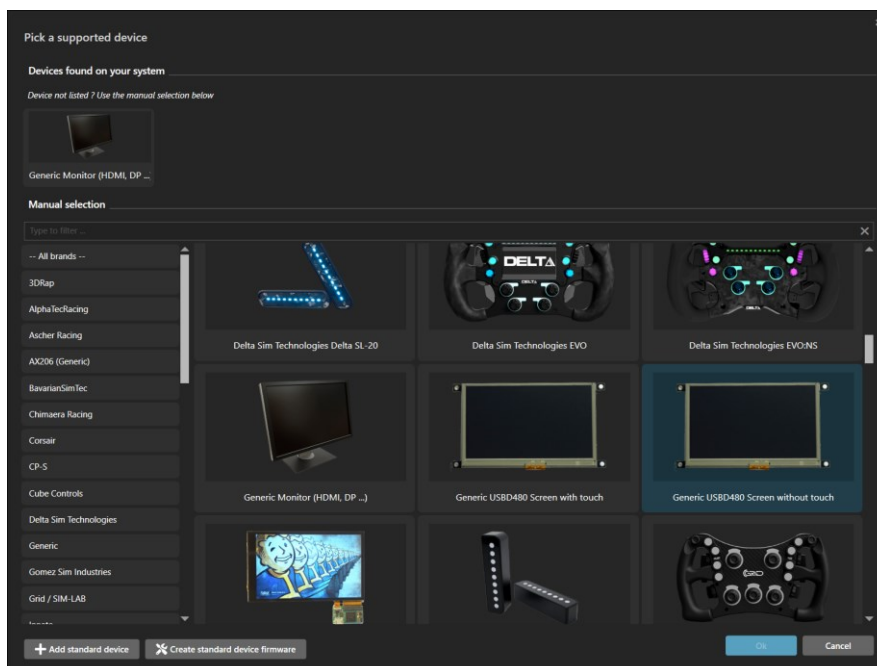
DATA DASH

When the Data Dash is connected to the PC, the screen will initialise with the base SimworX screen. To get the screen to display the current information output from the game we will need to connect it via Simhub using the steps below.

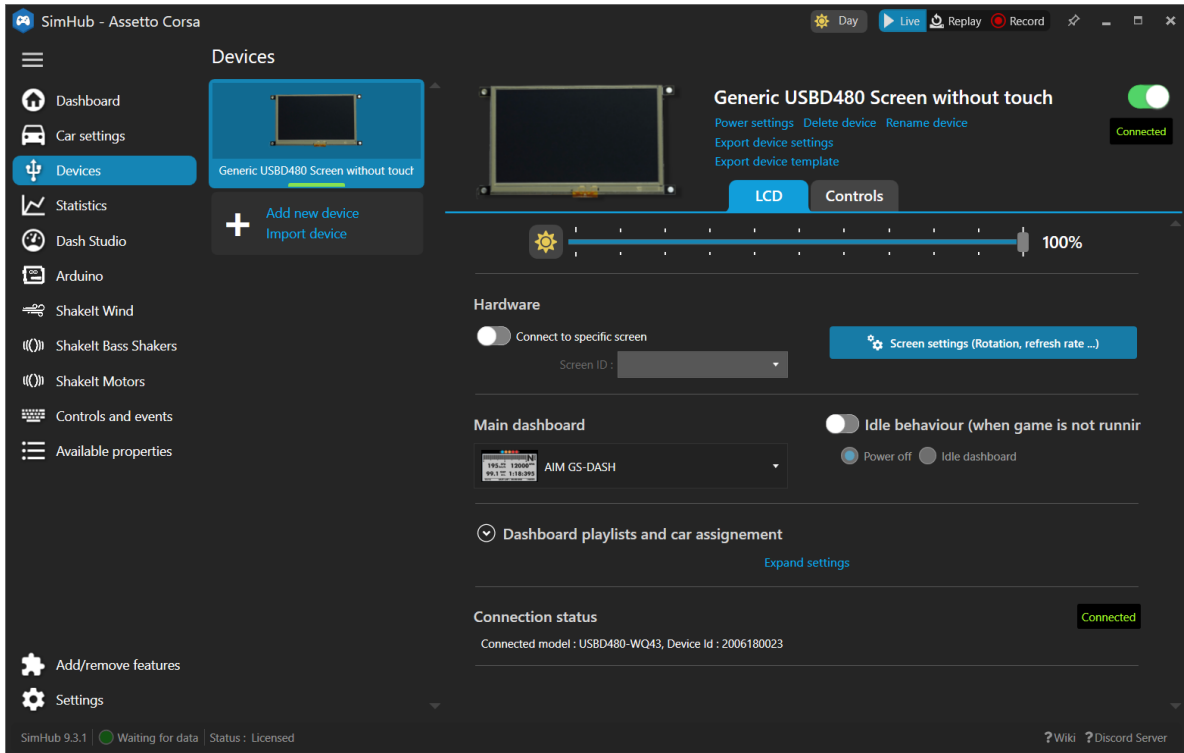
- On the left side of the Simhub software press the “Devices” tab.



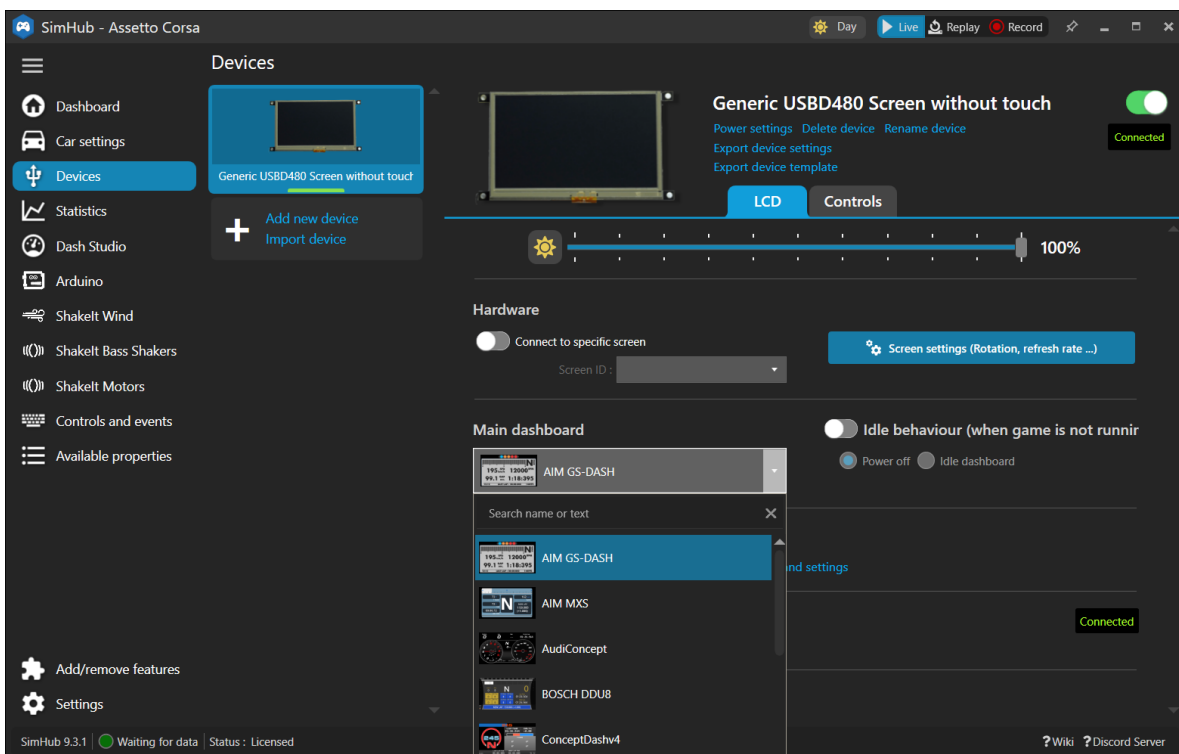
- Click on the large blue button “Add device”, this will load a new screen with all the different devices available. Scroll down the list until you see “Generic USB480 Screen without touch” click on that to highlight it and press ok..



- The screen will now connect to the software.



- The dash that will be displayed by default is the AIM GS-DASH, this can be changed by using the drop down field in the centre of the software screen “Main dashboard”.



Here you will find a variety of different dashboards to choose from. Scroll through until you find one you like and then simply click on the dash to load it directly to the screen.